

Product Information

Size:

50ug

Reactivity:

Human, Mouse

Source:

Rabbit

Isotype:

IgG

Applications:

ELISA, WB, IHC, IF

Recommended dilutions:

ELISA:1:2000-1:10000, WB:1:500-1:5000,
IHC:1:20-1:200, IF:1:50-1:200

Protein Background:

Cleaves C-terminal arginine or lysine residues from biologically active peptides such as kinins or anaphylatoxins in the circulation thereby regulating their activities. Down-regulates fibrinolysis by removing C-terminal lysine residues from fibrin that has already been partially degraded by plasmin.

Gene ID:

CPB2

Uniprot

Q96IY4

Synonyms:

Carboxypeptidase B2 (EC 3.4.17.20) (Carboxypeptidase U) (CPU) (Plasma carboxypeptidase B) (pCPB) (Thrombin-activable fibrinolysis inhibitor) (TAFI), CPB2

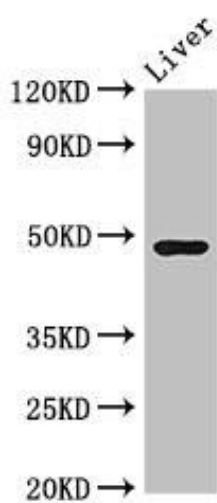
Immunogen:

Recombinant Human Carboxypeptidase B2 protein (225-372AA).

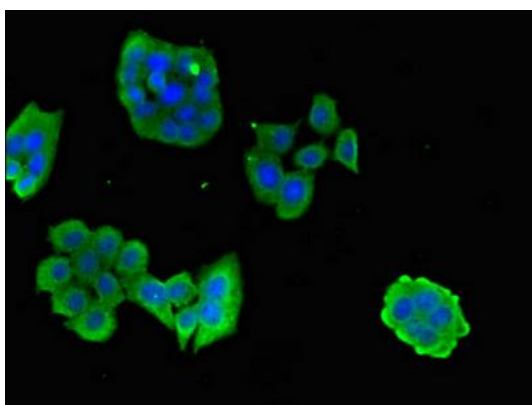
Storage:

Preservative: 0.03% Proclin 300. Constituents: 50% Glycerol, 0.01M PBS, pH 7.4

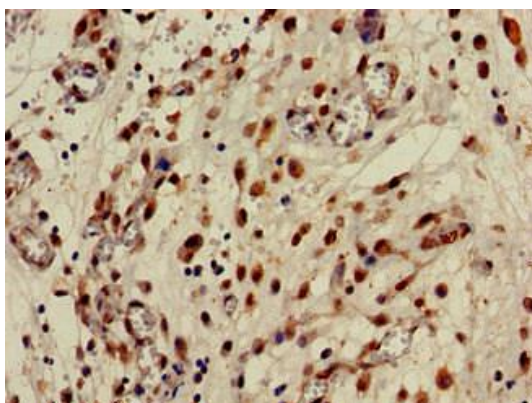
Product Images



Western Blot. Positive WB detected in: Mouse liver tissue. All lanes: CPB2 antibody at 3.4µg/ml. Secondary. Goat polyclonal to rabbit IgG at 1/50000 dilution. Predicted band size: 49, 41 kDa. Observed band size: 49 kDa.



Immunofluorescent analysis of PC-3 cells using PACO51442 at dilution of 1:100 and Alexa Fluor 488-conjugated AffiniPure Goat Anti-Rabbit IgG(H+L).



Immunohistochemistry of paraffin-embedded human lung cancer using PACO51442 at dilution of 1:100.