

PACO51450

Product Information

Size:

50ug

Reactivity:

Human, Mouse

Source:

Rabbit

Isotype:

IgG

Applications:

ELISA, WB, IHC

Recommended dilutions:

ELISA:1:2000-1:10000, WB:1:500-1:5000,
IHC:1:20-1:200

Protein Background:

Produced only during pregnancy and is involved in stimulating lactation, fetal growth and metabolism. Does not interact with GHR but only activates PRLR through zinc-induced dimerization.

Gene ID:

CSH2

Uniprot

P0DML3

Synonyms:

Chorionic somatomammotropin hormone 2 (Choriomammotropin) (Lactogen) (Placental lactogen) (PL), CSH2

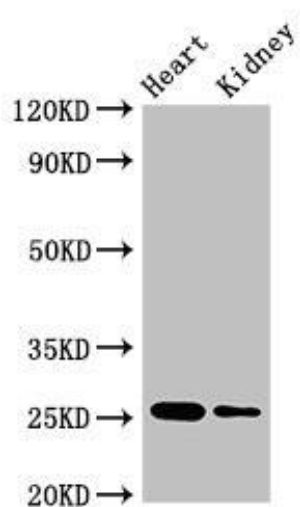
Immunogen:

Recombinant Human Chorionic somatomammotropin hormone 2 protein (27-217AA).

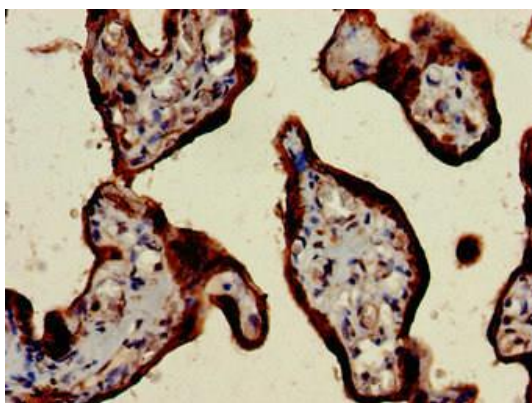
Storage:

Preservative: 0.03% Proclin 300. Constituents: 50% Glycerol, 0.01M PBS, pH 7.4

Product Images



Western Blot. Positive WB detected in: Mouse heart tissue, Mouse kidney tissue. All lanes: CSH2 antibody at 4 μ g/ml. Secondary. Goat polyclonal to rabbit IgG at 1/50000 dilution. Predicted band size: 25, 19, 14 kDa. Observed band size: 25 kDa.



Immunohistochemistry of paraffin-embedded human placenta tissue using PACO51450 at dilution of 1:100.