

PACO51482

Product Information

Size:

50ug

Reactivity:

Human

Source:

Rabbit

Isotype:

IgG

Applications:

ELISA, IHC

Recommended dilutions:

ELISA:1:2000-1:10000, IHC:1:20-1:200

Protein Background:

Involved in angiogenesis; promotes angiogenic sprouting. May have potent implications in lung endothelial cell-leukocyte interactions.

Gene ID:

ESM1

Uniprot

Q9NQ30

Synonyms:

Endothelial cell-specific molecule 1 (ESM-1), ESM1

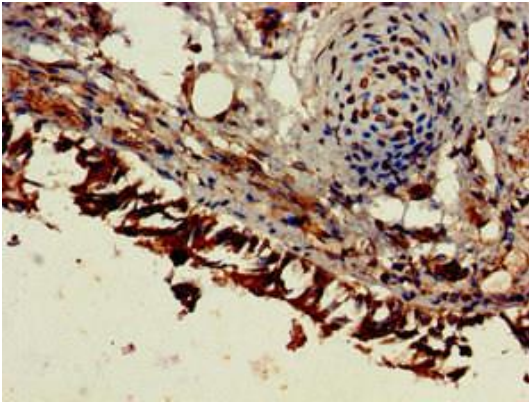
Immunogen:

Recombinant Human Endothelial cell-specific molecule 1 protein (20-184AA).

Storage:

Preservative: 0.03% Proclin 300. Constituents: 50% Glycerol, 0.01M PBS, pH 7.4

Product Images



Immunohistochemistry of paraffin-embedded human lung tissue using PACO51482 at dilution of 1:100.