

PACO51602

---

## Product Information

**Size:**

50ug

**Reactivity:**

Human

**Source:**

Rabbit

**Isotype:**

IgG

**Applications:**

ELISA, IHC, IF

**Recommended dilutions:**

ELISA:1:2000-1:10000, IHC:1:20-1:200,  
IF:1:50-1:200

**Protein Background:**

Cleaves peptide substrates after methionine, leucine, and norleucine. Physiological substrates include EZR, alpha-tubulins and the apoptosis inhibitor BIRC5/Survivin. Promotes caspase activation and subsequent apoptosis of target cells.

**Gene ID:**

GZMM

**Uniprot**

P51124

**Synonyms:**

Granzyme M (EC 3.4.21) (Met-1 serine protease) (Hu-Met-1) (Met-ase) (Natural killer cell granular protease), GZMM, MET1

**Immunogen:**

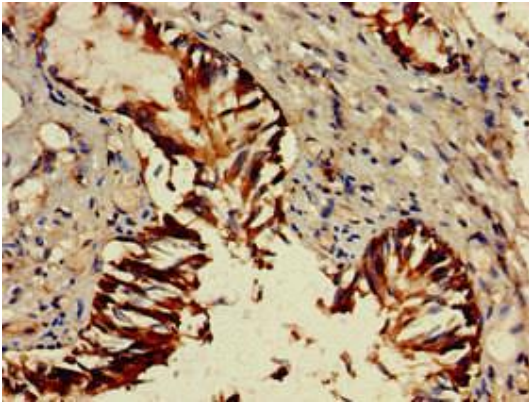
Recombinant Human Granzyme M protein (98-243AA).

**Storage:**

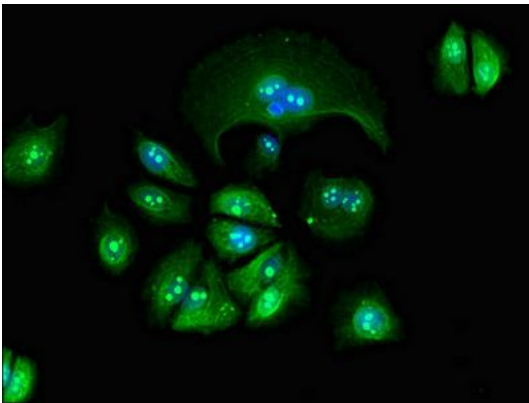
Preservative: 0.03% Proclin 300. Constituents: 50% Glycerol, 0.01M PBS, pH 7.4

## Product Images

---



Immunohistochemistry of paraffin-embedded human lung tissue using PACO51602 at dilution of 1:100.



Immunofluorescent analysis of MCF-7 cells using PACO51602 at dilution of 1:100 and Alexa Fluor 488-conjugated AffiniPure Goat Anti-Rabbit IgG(H+L).