

HSPB6 Antibody



PACO51618

Product Information

Size:

50ug

Reactivity:

Human, Mouse

Source:

Rabbit

Isotype:

IgG

Applications:

ELISA, WB

Recommended dilutions:

ELISA:1:2000-1:10000, WB:1:500-1:5000

Protein Background:

cytoplasm, nucleus, protein homodimerization activity.

Gene ID:

HSPB6

Uniprot

O14558

Synonyms:

Heat shock protein beta-6 (HspB6) (Heat shock 20 kDa-like protein p20), HSPB6

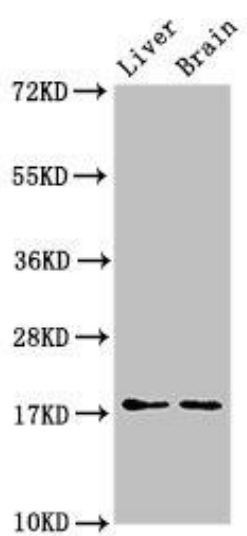
Immunogen:

Recombinant Human Heat shock protein beta-6 protein (1-160AA).

Storage:

Preservative: 0.03% Proclin 300. Constituents: 50% Glycerol, 0.01M PBS, pH 7.4

Product Images



Western Blot. Positive WB detected in: Mouse liver tissue, Mouse brain tissue. All lanes: HSPB6 antibody at 3 μ g/ml. Secondary. Goat polyclonal to rabbit IgG at 1/50000 dilution. Predicted band size: 18 kDa. Observed band size: 18 kDa.