

## Product Information

**Size:**

50ug

**Reactivity:**

Human, Mouse

**Source:**

Rabbit

**Isotype:**

IgG

**Applications:**

ELISA, WB, IHC

**Recommended dilutions:**

ELISA:1:2000-1:10000, WB:1:500-1:5000,  
IHC:1:20-1:200

**Protein Background:**

RNA-binding protein that binds to iron-responsive elements (IRES), which are stem-loop structures found in the 5'-UTR of ferritin, and delta aminolevulinic acid, synthase mRNAs, and in the 3'-UTR of transferrin receptor mRNA. Binding to the IRE element in ferritin results in the repression of its mRNA translation. Binding of the protein to the transferrin receptor mRNA inhibits the degradation of this otherwise rapidly degraded mRNA.

**Gene ID:**

IREB2

**Uniprot**

P48200

**Synonyms:**

Iron-responsive element-binding protein 2 (IRE-BP 2) (Iron regulatory protein 2) (IRP2), IREB2

**Immunogen:**

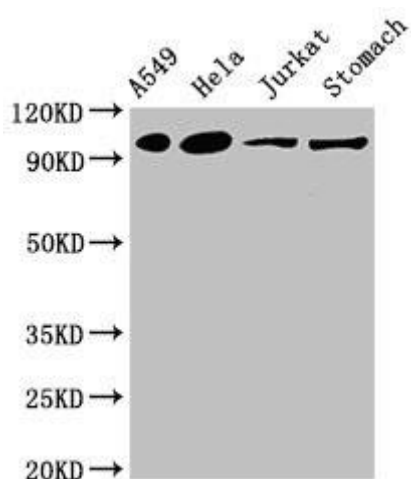
Recombinant Human Iron-responsive element-binding protein 2 protein (107-216AA).

**Storage:**

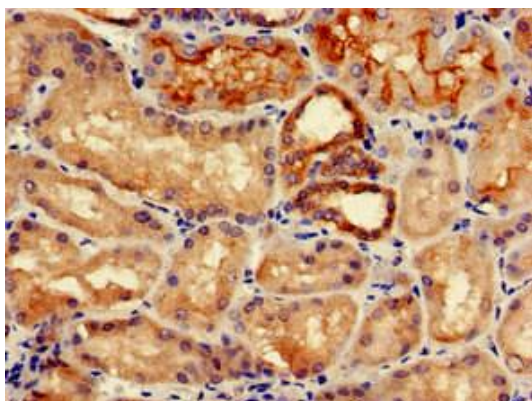
Preservative: 0.03% Proclin 300. Constituents: 50% Glycerol, 0.01M PBS, pH 7.4

## Product Images

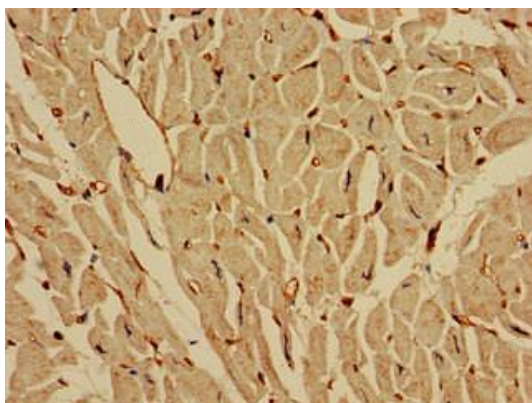
---



Western Blot. Positive WB detected in: A549 whole cell lysate, HeLa whole cell lysate, Jurkat whole cell lysate, Mouse stomach tissue. All lanes: IREB2 antibody at 4 $\mu$ g/ml. Secondary. Goat polyclonal to rabbit IgG at 1/50000 dilution. Predicted band size: 106, 38 kDa. Observed band size: 106 kDa.



Immunohistochemistry of paraffin-embedded human kidney tissue using PACO51658 at dilution of 1:100.



Immunohistochemistry of paraffin-embedded human heart tissue using PACO51658 at dilution of 1:100.