

KIF2A Antibody



PACO51674

Product Information

Size:

50ug

Reactivity:

Human

Source:

Rabbit

Isotype:

IgG

Applications:

ELISA, IHC

Recommended dilutions:

ELISA:1:2000-1:10000, IHC:1:20-1:200

Protein Background:

Plus end-directed microtubule-dependent motor required for normal brain development. May regulate microtubule dynamics during axonal growth. Required for normal progression through mitosis. Required for normal congress of chromosomes at the metaphase plate. Required for normal spindle dynamics during mitosis. Promotes spindle turnover. Implicated in formation of bipolar mitotic spindles. Has microtubule depolymerization activity.

Gene ID:

KIF2A

Uniprot

O00139

Synonyms:

Kinesin-like protein KIF2A (Kinesin-2) (hK2), KIF2A, KIF2 KNS2

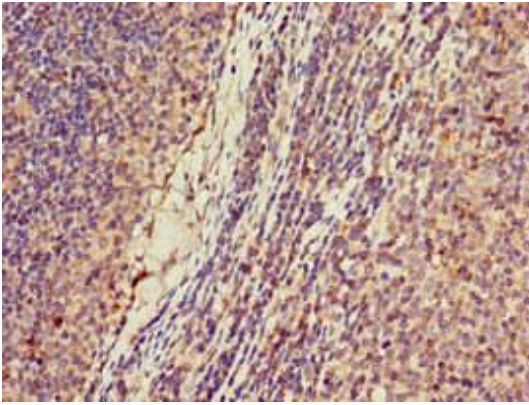
Immunogen:

Recombinant Human Kinesin-like protein KIF2A protein (5-308AA).

Storage:

Preservative: 0.03% Proclin 300. Constituents: 50% Glycerol, 0.01M PBS, pH 7.4

Product Images



Immunohistochemistry of paraffin-embedded human lymph node tissue using PACO51674 at dilution of 1:100.