

MYF6 Antibody



PACO51726

Product Information

Size:

50ug

Reactivity:

Human, Mouse, Rat

Source:

Rabbit

Isotype:

IgG

Applications:

ELISA, WB, IHC, IF

Recommended dilutions:

ELISA:1:2000-1:10000, WB:1:500-1:5000,
IHC:1:20-1:200, IF:1:50-1:200

Protein Background:

Involved in muscle differentiation (myogenic factor). Induces fibroblasts to differentiate into myoblasts. Probable sequence specific DNA-binding protein.

Gene ID:

MYF6

Uniprot

P23409

Synonyms:

Myogenic factor 6 (Myf-6) (Class C basic helix-loop-helix protein 4) (bHLHc4) (Muscle-specific regulatory factor 4), MYF6, BHLHC4 MRF4

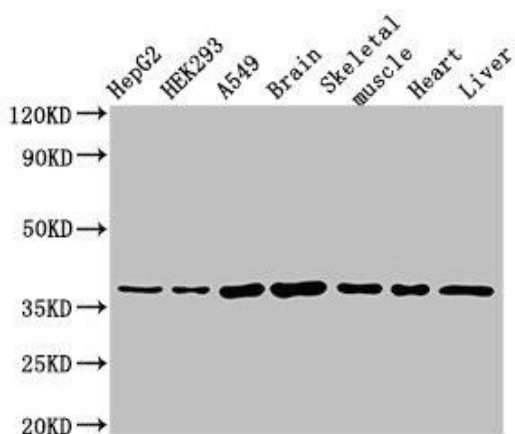
Immunogen:

Recombinant Human Myogenic factor 6 protein (26-232AA).

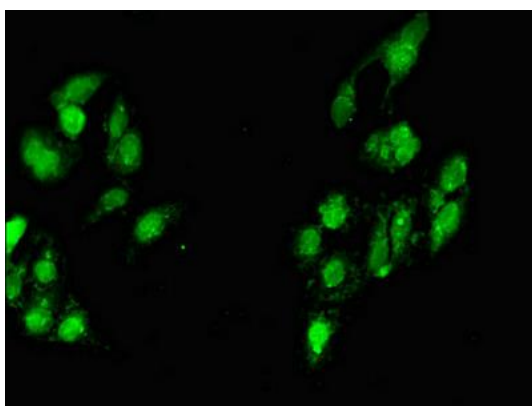
Storage:

Preservative: 0.03% Proclin 300. Constituents: 50% Glycerol, 0.01M PBS, pH 7.4

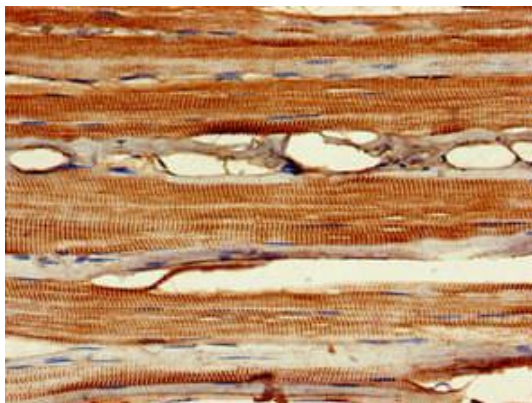
Product Images



Western Blot. Positive WB detected in: HepG2 whole cell lysate, HEK293 whole cell lysate, A549 whole cell lysate, Mouse brain tissue, Mouse skeletal muscle tissue, Rat heart tissue, Rat liver tissue. All lanes: MYF6 antibody at 3 μ g/ml. Secondary. Goat polyclonal to rabbit IgG at 1/50000 dilution. Predicted band size: 27 kDa. Observed band size: 37 kDa.



Immunofluorescent analysis of HeLa cells using PACO51726 at dilution of 1:100 and Alexa Fluor 488-conjugated AffiniPure Goat Anti-Rabbit IgG(H+L).



Immunohistochemistry of paraffin-embedded human skeletal muscle tissue using PACO51726 at dilution of 1:100.