

OBSL1 Antibody



PACO51770

Product Information

Size:

50ug

Reactivity:

Human

Source:

Rabbit

Isotype:

IgG

Applications:

ELISA, WB, IHC

Recommended dilutions:

ELISA:1:2000-1:10000, WB:1:500-1:5000,
IHC:1:20-1:200

Protein Background:**Gene ID:**

OBSL1

Uniprot

Q6P710

Synonyms:

Obscurin-like protein 1, OBSL1, KIAA0657

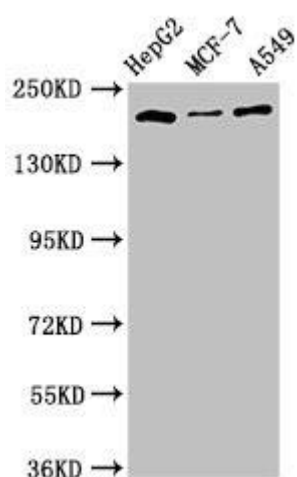
Immunogen:

Recombinant Human OBSL1 protein (1-61AA).

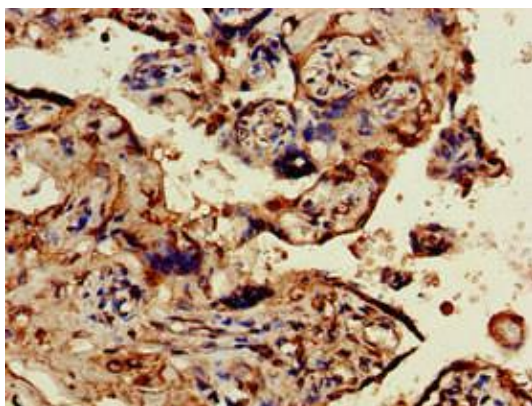
Storage:

Preservative: 0.03% Proclin 300. Constituents: 50% Glycerol, 0.01M PBS, pH 7.4

Product Images



Western Blot. Positive WB detected in: HepG2 whole cell lysate, MCF-7 whole cell lysate, A549 whole cell lysate, . All lanes: OBSL1 antibody at 2.5 μ g/ml. Secondary. Goat polyclonal to rabbit IgG at 1/50000 dilution. Predicted band size: 207 kDa. Observed band size: 207 kDa.



Immunohistochemistry of paraffin-embedded human placenta tissue using PACO51770 at dilution of 1:100.