

### Product Information

**Size:**

50ug

**Reactivity:**

Human, Mouse, Rat

**Source:**

Rabbit

**Isotype:**

IgG

**Applications:**

ELISA, WB

**Recommended dilutions:**

ELISA:1:2000-1:10000, WB:1:500-1:5000

**Protein Background:**

DNA-dependent RNA polymerase catalyzes the transcription of DNA into RNA using the four ribonucleoside triphosphates as substrates. Common component of RNA polymerases I and III which synthesize ribosomal RNA precursors and small RNAs, such as 5S rRNA and tRNAs, respectively. RPAC1 is part of the Pol core element with the central large cleft and probably a clamp element that moves to open and close the cleft.

**Gene ID:**

POLR1C

**Uniprot**

O15160

**Synonyms:**

DNA-directed RNA polymerases I and III subunit RPAC1 (DNA-directed RNA polymerase I subunit C) (RNA polymerases I and III subunit AC1) (AC40) (DNA-directed RNA polymerases I and III 40 kDa polypeptide) (RPA40) (RPA39) (RPC40), POLR1C, POLR1E

**Immunogen:**

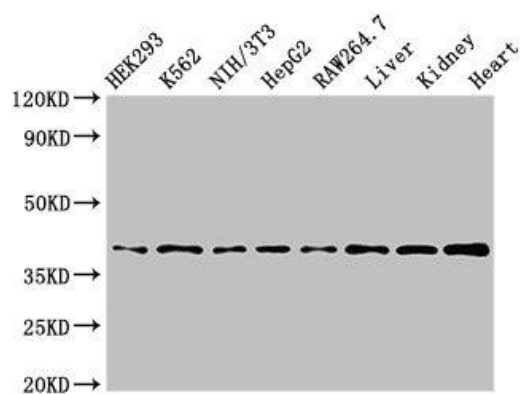
Recombinant Human DNA-directed RNA polymerases I and III subunit RPAC1 protein (125-230AA).

**Storage:**

Preservative: 0.03% Proclin 300. Constituents: 50% Glycerol, 0.01M PBS, pH 7.4

## Product Images

---



Western Blot. Positive WB detected in: HEK293 whole cell lysate, K562 whole cell lysate, NIH/3T3 whole cell lysate, HepG2 whole cell lysate, RAW264.7 whole cell lysate, Mouse liver tissue, Mouse kidney tissue, Rat heart tissue. All lanes: POLR1C antibody at 3 $\mu$ g/ml. Secondary. Goat polyclonal to rabbit IgG at 1/50000 dilution. Predicted band size: 40, 39 kDa. Observed band size: 40 kDa.