

Product Information

Size:

50ug

Reactivity:

Human

Source:

Rabbit

Isotype:

IgG

Applications:

ELISA, IHC, IF

Recommended dilutions:

ELISA:1:2000-1:10000, IHC:1:20-1:200,
IF:1:50-1:200

Protein Background:

Catalytic subunit of protein phosphatase 6 (PP6). PP6 is a component of a signaling pathway regulating cell cycle progression in response to IL2 receptor stimulation. N-terminal domain restricts G1 to S phase progression in cancer cells, in part through control of cyclin D1. Downregulates MAP3K7 kinase activation of the IL1 signaling pathway by dephosphorylation of MAP3K7.

Gene ID:

PPP6C

Uniprot

O00743

Synonyms:

Serine/threonine-protein phosphatase 6 catalytic subunit (PP6C) (EC 3.1.3.16) [Cleaved into: Serine/threonine-protein phosphatase 6 catalytic subunit, N-terminally processed], PPP6C, PPP6

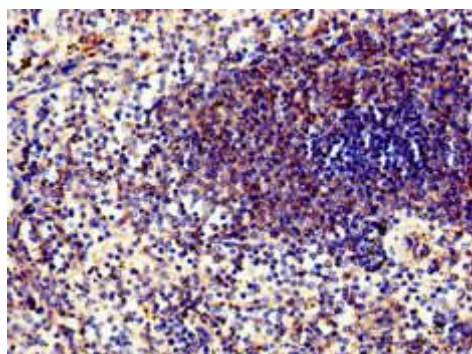
Immunogen:

Recombinant Human Serine/threonine-protein phosphatase 6 catalytic subunit protein (40-211AA).

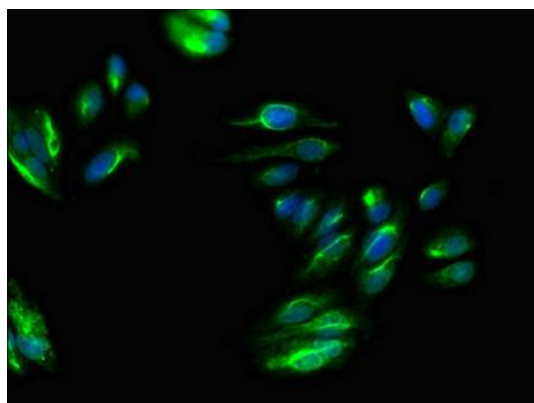
Storage:

Preservative: 0.03% Proclin 300. Constituents: 50% Glycerol, 0.01M PBS, pH 7.4

Product Images



Immunohistochemistry of paraffin-embedded human spleen tissue using PACO51850 at dilution of 1:100.



Immunofluorescent analysis of HepG2 cells using PACO51850 at dilution of 1:100 and Alexa Fluor 488-conjugated AffiniPure Goat Anti-Rabbit IgG(H+L).