

## Product Information

**Size:**

50ug

**Reactivity:**

Mouse, Human, Rat

**Source:**

Rabbit

**Isotype:**

IgG

**Applications:**

ELISA, WB

**Recommended dilutions:**

ELISA:1:2000-1:10000, WB:1:500-1:5000

**Protein Background:**

Responsible for initiating activation of pancreatic proteolytic proenzymes (trypsin, chymotrypsin and carboxypeptidase A). It catalyzes the conversion of trypsinogen to trypsin which in turn activates other proenzymes including chymotrypsinogen, procarboxypeptidases, and proelastases.

**Gene ID:**

Tmprss15

**Uniprot**

P97435

**Synonyms:**

Enteropeptidase (EC 3.4.21.9) (Enterokinase) (Serine protease 7) (Transmembrane protease serine 15) [Cleaved into: Enteropeptidase non-catalytic heavy chain; Enteropeptidase catalytic light chain], Tmprss15, Entk Prss7

**Immunogen:**

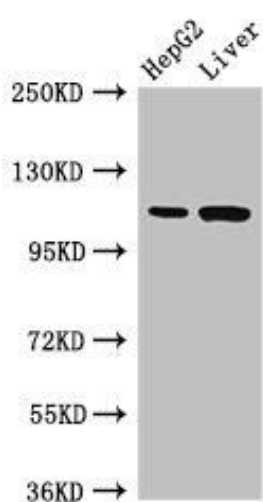
Recombinant Mouse Enteropeptidase protein (830-1069AA).

**Storage:**

Preservative: 0.03% Proclin 300. Constituents: 50% Glycerol, 0.01M PBS, pH 7.4

## Product Images

---



Western Blot. Positive WB detected in: HepG2 whole cell lysate, Rat liver tissue. All lanes: Tmprss15 antibody at 3 $\mu$ g/ml. Secondary. Goat polyclonal to rabbit IgG at 1/50000 dilution. Predicted band size: 119 kDa. Observed band size: 119 kDa.