

### Product Information

**Size:**

50ug

**Reactivity:**

Human, Mouse, Rat

**Source:**

Rabbit

**Isotype:**

IgG

**Applications:**

ELISA, WB, IHC, IF

**Recommended dilutions:**

ELISA:1:2000-1:10000, WB:1:500-1:5000,  
IHC:1:20-1:200, IF:1:50-1:200

**Protein Background:**

Transcription factor implicated in the cell fate determination in various organs. Binds to the E-box consensus sequence 5'-CANNTG-3'. Plays a role in early and late pancreas development and differentiation. Important for determining whether cells allocated to the pancreatic buds continue towards pancreatic organogenesis or revert back to duodenal fates. May be involved in the maintenance of exocrine pancreas-specific gene expression including ELA1 and amylase. Required for the formation of pancreatic acinar and ductal cells. Plays an important role in cerebellar development. Directly regulated by FOXN4 and RORC during retinal development, FOXN4-PTF1A pathway plays a central role in directing the differentiation of retinal progenitors towards horizontal and amacrine fates.

**Gene ID:**

PTF1A

**Uniprot**

Q7RTS3

**Synonyms:**

Pancreas transcription factor 1 subunit alpha (Class A basic helix-loop-helix protein 29) (bHLHa29) (Pancreas-specific transcription factor 1a) (bHLH transcription factor p48) (p48 DNA-binding subunit of transcription factor PTF1) (PTF1-p48), PTF1A, BHLHA29 PTF1P48

**Immunogen:**

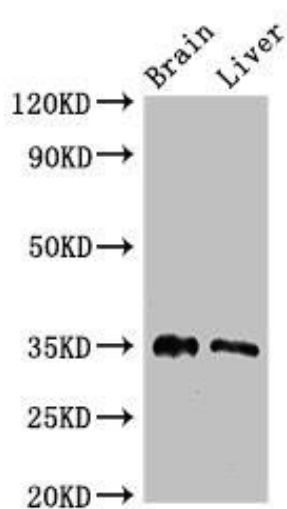
Recombinant Human Pancreas transcription factor 1 subunit &alpha; protein (224-325AA).

**Storage:**

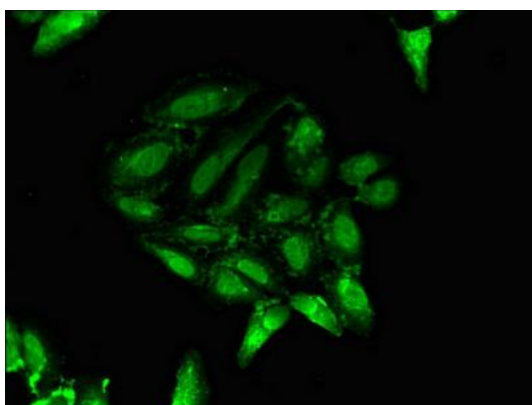
Preservative: 0.03% Proclin 300. Constituents: 50% Glycerol, 0.01M PBS, pH 7.4

## Product Images

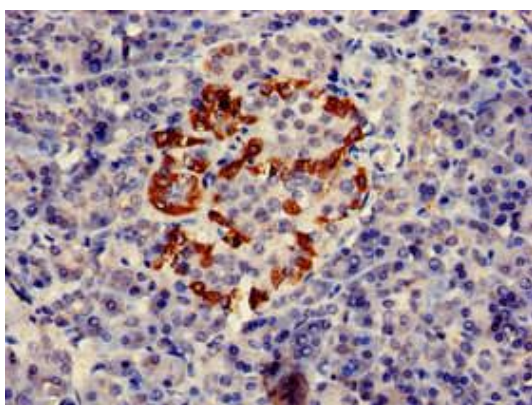
---



Western Blot. Positive WB detected in: Mouse brain tissue, Rat liver tissue. All lanes: PTF1A antibody at 2.7 $\mu$ g/ml. Secondary: Goat polyclonal to rabbit IgG at 1/50000 dilution. Predicted band size: 35 kDa. Observed band size: 35 kDa.



Immunofluorescent analysis of HeLa cells using PACO51902 at dilution of 1:100 and Alexa Fluor 488-conjugated AffiniPure Goat Anti-Rabbit IgG(H+L).



Immunohistochemistry of paraffin-embedded human pancreatic tissue using PACO51902 at dilution of 1:100.