

Product Information

Size:

50ug

Reactivity:

Human, Mouse

Source:

Rabbit

Isotype:

IgG

Applications:

ELISA, WB, IF

Recommended dilutions:

ELISA:1:2000-1:10000, WB:1:500-1:5000,
IF:1:50-1:200

Protein Background:

The elongation of primed DNA templates by DNA polymerase delta and epsilon requires the action of the accessory proteins proliferating cell nuclear antigen (PCNA) and activator 1. This subunit may be involved in the elongation of the multiprimed DNA template.

Gene ID:

RFC4

Uniprot

P35249

Synonyms:

Replication factor C subunit 4 (Activator 1 37 kDa subunit) (A1 37 kDa subunit) (Activator 1 subunit 4) (Replication factor C 37 kDa subunit) (RF-C 37 kDa subunit) (RFC37), RFC4

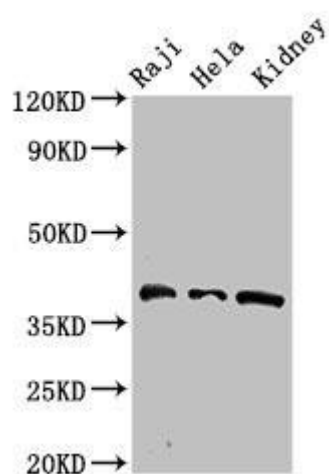
Immunogen:

Recombinant Human Replication factor C subunit 4 protein (9-142AA).

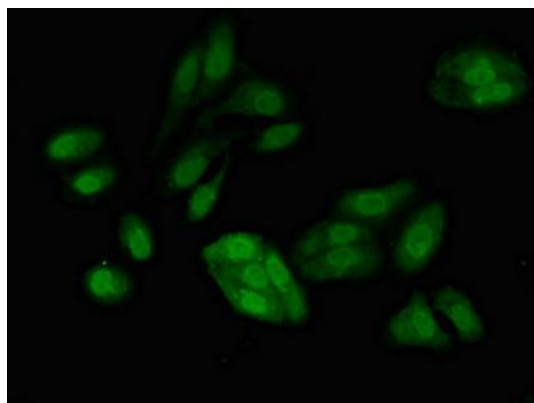
Storage:

Preservative: 0.03% Proclin 300. Constituents: 50% Glycerol, 0.01M PBS, pH 7.4

Product Images



Western Blot. Positive WB detected in: Raji whole cell lysate, HeLa whole cell lysate, Mouse kidney tissue. All lanes: RFC4 antibody at 2.7 μ g/ml. Secondary. Goat polyclonal to rabbit IgG at 1/50000 dilution. Predicted band size: 40, 34 kDa. Observed band size: 40 kDa.



Immunofluorescent analysis of HepG2 cells using PACO51918 at dilution of 1:100 and Alexa Fluor 488-conjugated AffiniPure Goat Anti-Rabbit IgG(H+L).