

PACO51942

Product Information

Size:

50ug

Reactivity:

Human, Rat

Source:

Rabbit

Isotype:

IgG

Applications:

ELISA, WB, IHC

Recommended dilutions:

ELISA:1:2000-1:10000, WB:1:200-1:3000,
IHC:1:20-1:200

Protein Background:

Most important serine protease inhibitor in plasma that regulates the blood coagulation cascade. AT-III inhibits thrombin, matriptase-3/TMPRSS7, as well as factors IXa, Xa and XIa. Its inhibitory activity is greatly enhanced in the presence of heparin.

Gene ID:

SERPINC1

Uniprot

P01008

Synonyms:

Antithrombin-III (ATIII) (Serpine C1), SERPINC1, AT3

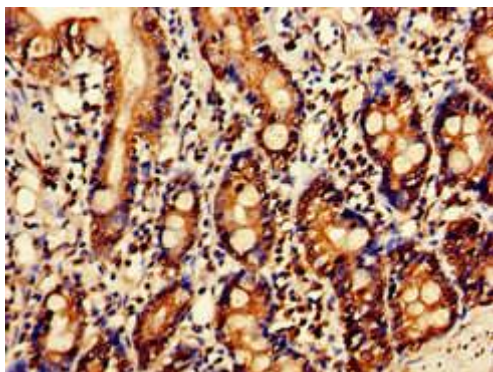
Immunogen:

Recombinant Human Antithrombin-III protein (37-180AA).

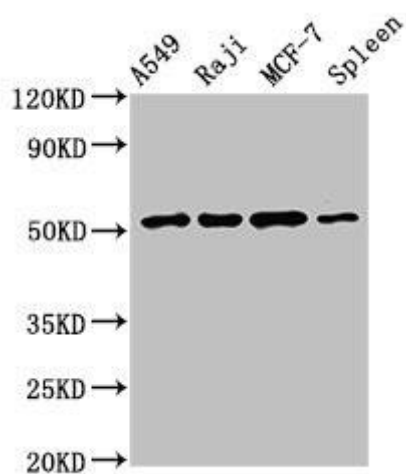
Storage:

Preservative: 0.03% Proclin 300. Constituents: 50% Glycerol, 0.01M PBS, pH 7.4

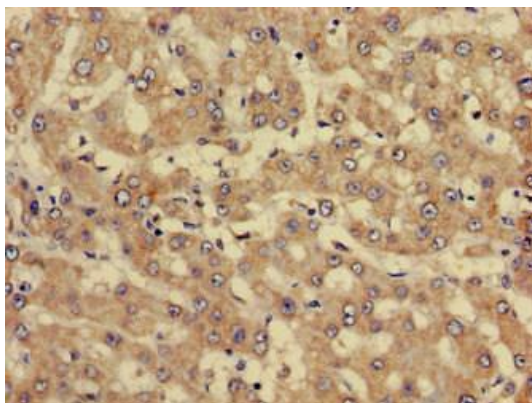
Product Images



Immunohistochemistry of paraffin-embedded human small intestine tissue using PACO51942 at dilution of 1:100.



Western Blot. Positive WB detected in: A549 whole cell lysate, Raji whole cell lysate, MCF-7 whole cell lysate, Rat spleen tissue. All lanes: SERPINC1 antibody at 2.5µg/ml. Secondary. Goat polyclonal to rabbit IgG at 1/50000 dilution. Predicted band size: 53 kDa. Observed band size: 53 kDa.



Immunohistochemistry of paraffin-embedded human liver cancer using PACO51942 at dilution of 1:100.