

## Product Information

**Size:**

50ug

**Reactivity:**

Human

**Source:**

Rabbit

**Isotype:**

IgG

**Applications:**

ELISA, IF

**Recommended dilutions:**

ELISA:1:2000-1:10000, IF:1:50-1:200

**Protein Background:**

Soluble frizzled-related proteins (sFRPS) function as modulators of Wnt signaling through direct interaction with Wnts. They have a role in regulating cell growth and differentiation in specific cell types. SFRP2 may be important for eye retinal development and for myogenesis.

**Gene ID:**

SFRP2

**Uniprot**

Q96HF1

**Synonyms:**

Secreted frizzled-related protein 2 (FRP-2) (sFRP-2) (Secreted apoptosis-related protein 1) (SARP-1), SFRP2, FRP2 SARP1

**Immunogen:**

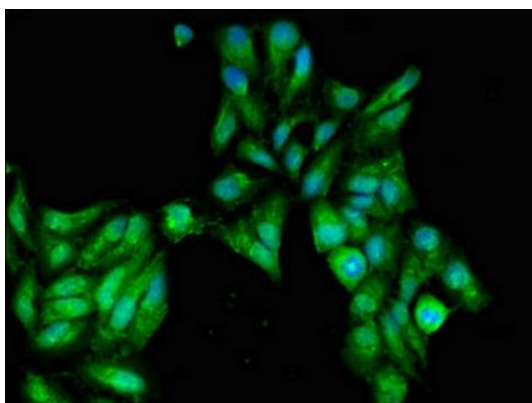
Recombinant Human Secreted frizzled-related protein 2 protein (68-186AA).

**Storage:**

Preservative: 0.03% Proclin 300. Constituents: 50% Glycerol, 0.01M PBS, pH 7.4

## Product Images

---



Immunofluorescent analysis of HeLa cells using PACO51950 at dilution of 1:100 and Alexa Fluor 488-conjugated AffiniPure Goat Anti-Rabbit IgG(H+L).