

# TPD52L2 Antibody



PACO52018

---

## Product Information

**Size:**

50ug

**Reactivity:**

Human, Mouse

**Source:**

Rabbit

**Isotype:**

IgG

**Applications:**

ELISA, WB, IHC, IF

**Recommended dilutions:**

ELISA:1:2000-1:10000, WB:1:200-1:5000,  
IHC:1:20-1:200, IF:1:50-1:200

**Protein Background:**

cytoplasm, perinuclear region of cytoplasm, poly(A) RNA binding, protein heterodimerization activity, protein homodimerization activity, regulation of cell proliferation.

**Gene ID:**

TPD52L2

**Uniprot**

O43399

**Synonyms:**

Tumor protein D54 (hD54) (Tumor protein D52-like 2), TPD52L2

**Immunogen:**

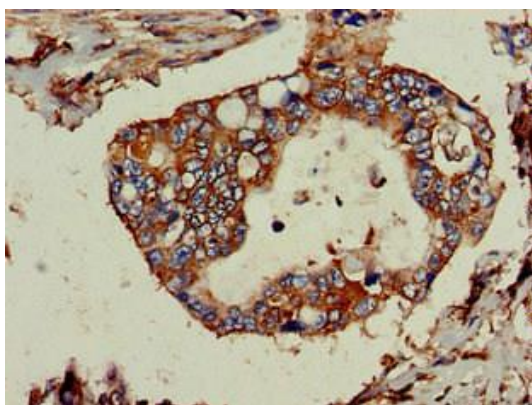
Recombinant Human Tumor protein D54 protein (1-206AA).

**Storage:**

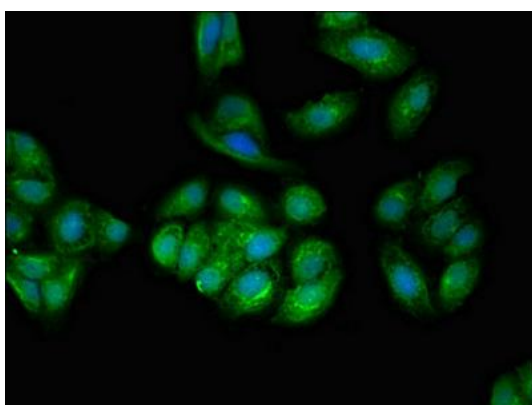
Preservative: 0.03% Proclin 300. Constituents: 50% Glycerol, 0.01M PBS, pH 7.4

## Product Images

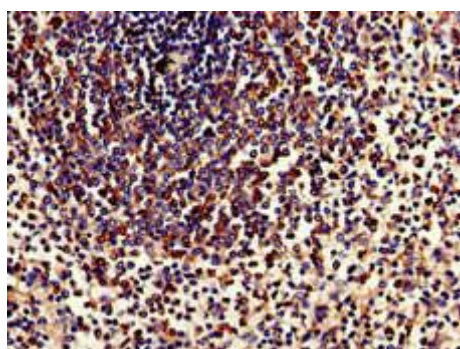
---



Immunohistochemistry of paraffin-embedded human pancreatic cancer using PACO52018 at dilution of 1:100.



Immunofluorescent analysis of HepG2 cells using PACO52018 at dilution of 1:100 and Alexa Fluor 488-conjugated AffiniPure Goat Anti-Rabbit IgG(H+L).



Immunohistochemistry of paraffin-embedded human spleen tissue using PACO52018 at dilution of 1:100.