

## Product Information

**Size:**

50ug

**Reactivity:**

Epstein-Barr virus

**Source:**

Rabbit

**Isotype:**

IgG

**Applications:**

ELISA, WB

**Recommended dilutions:**

ELISA:1:2000-1:10000, WB:1:200-1:2000

**Protein Background:**

Isoform LMP2A maintains EBV latent infection of B-lymphocyte, by preventing lytic reactivation of the virus in response to surface immunoglobulin (slg) cross-linking. Acts like a dominant negative inhibitor of the slg-associated protein tyrosine kinases, LYN and SYK. Also blocks translocation of the B-cell antigen receptor (BCR) into lipid rafts, preventing the subsequent signaling and accelerated internalization of the BCR upon BCR cross-linking. Serves as a molecular scaffold to recruit SYK, LYN and E3 protein-ubiquitin ligases, such as ITCH and NEDD4L, leading to ubiquitination and potential degradation of both tyrosines kinases. Possesses a constitutive signaling activity in non-transformed cells, inducing bypass of normal B lymphocyte developmental checkpoints allowing immunoglobulin-negative cells to colonize peripheral lymphoid organs.

**Gene ID:**

LMP2

**Uniprot**

P13285

**Synonyms:**

Latent membrane protein 2 (Terminal protein), LMP2

**Immunogen:**

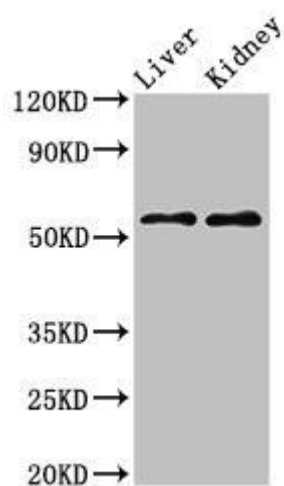
Recombinant Epstein-Barr virus Latent membrane protein 2 protein (1-147AA).

**Storage:**

Preservative: 0.03% Proclin 300. Constituents: 50% Glycerol, 0.01M PBS, pH 7.4

## Product Images

---



Western Blot. Positive WB detected in: Mouse liver tissue, Mouse kidney tissue. All lanes: LMP2 antibody at 2 $\mu$ g/ml. Secondary. Goat polyclonal to rabbit IgG at 1/50000 dilution. Predicted band size: 54, 41 kDa. Observed band size: 54 kDa.