

PACO52178

Product Information

Size:

50ug

Reactivity:

Salmonella typhimurium

Source:

Rabbit

Isotype:

IgG

Applications:

ELISA, WB

Recommended dilutions:

ELISA:1:2000-1:10000, WB:1:500-1:5000

Protein Background:

Required for invasion of epithelial cells.

Gene ID:

prgJ

Uniprot

P41785

Synonyms:

Protein PrgJ, prgJ

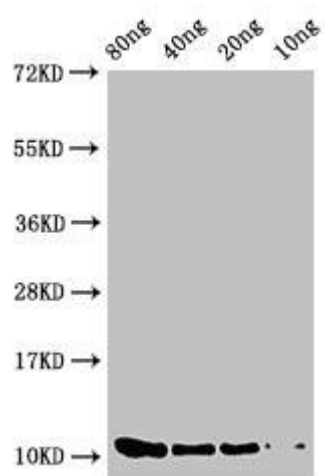
Immunogen:

Recombinant Salmonella typhimurium Protein PrgJ protein (1-101AA).

Storage:

Preservative: 0.03% Proclin 300. Constituents: 50% Glycerol, 0.01M PBS, pH 7.4

Product Images



Western Blot. Positive WB detected in Recombinant protein. All lanes: prgJ antibody at 2 μ g/ml. Secondary. Goat polyclonal to rabbit IgG at 1/50000 dilution. Predicted band size: 11 kDa. Observed band size: 11 kDa.