

Fgf15 Antibody



PACO52274

Product Information

Size:

50ug

Reactivity:

Mouse, Rat

Source:

Rabbit

Isotype:

IgG

Applications:

ELISA, WB

Recommended dilutions:

ELISA:1:2000-1:10000, WB:1:500-1:5000

Protein Background:

Involved in the suppression of bile acid, biosynthesis through down-regulation of CYP7A1 expression.

Gene ID:

Fgf15

Uniprot

O35622

Synonyms:

Fibroblast growth factor 15 (FGF-15), Fgf15

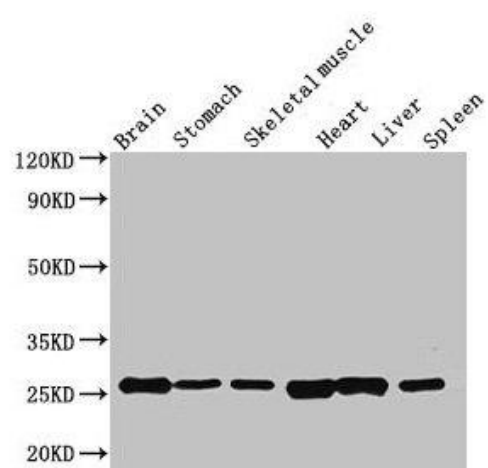
Immunogen:

Recombinant Mouse Fibroblast growth factor 15 protein (26-218AA).

Storage:

Preservative: 0.03% Proclin 300. Constituents: 50% Glycerol, 0.01M PBS, pH 7.4

Product Images



Western Blot. Positive WB detected in: Mouse brain tissue, Mouse stomach tissue, Mouse skeletal muscle tissue, Rat heart tissue, Rat liver tissue, Rat spleen tissue. All lanes: Fgf15 antibody at 3.5 μ g/ml. Secondary. Goat polyclonal to rabbit IgG at 1/50000 dilution. Predicted band size: 26 kDa. Observed band size: 26 kDa.