

Product Information

Size:

50ug

Reactivity:

Human

Source:

Rabbit

Isotype:

IgG

Applications:

ELISA, IHC, IF

Recommended dilutions:

ELISA:1:2000-1:10000, IHC:1:20-1:200,
IF:1:50-1:200

Protein Background:

Acts as subunit of the RNA polymerase II elongator complex, which is a histone acetyltransferase component of the RNA polymerase II (Pol II) holoenzyme and is involved in transcriptional elongation. Elongator may play a role in chromatin remodeling and is involved in acetylation of histones H3 and probably H4. Involved in cell migration.

Gene ID:

ELP6

Uniprot

Q0PNE2

Synonyms:

Elongator complex protein 6 (Angiotonin-transactivated protein 1) (Protein TMEM103), ELP6, ATP1 C3orf75 TMEM103

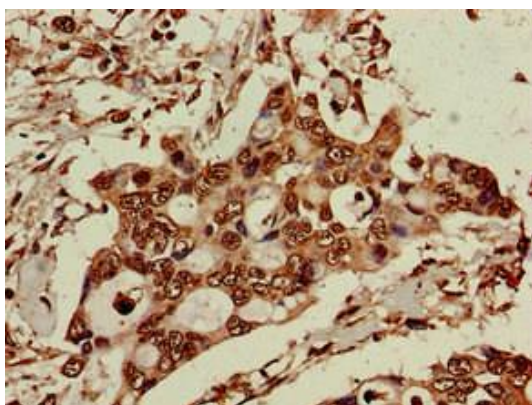
Immunogen:

Recombinant Human Elongator complex protein 6 protein (95-195AA).

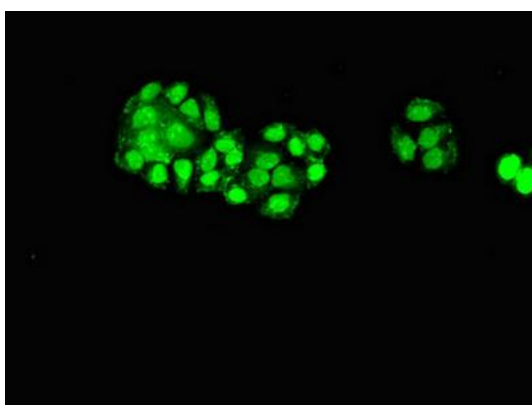
Storage:

Preservative: 0.03% Proclin 300. Constituents: 50% Glycerol, 0.01M PBS, pH 7.4

Product Images



Immunohistochemistry of paraffin-embedded human pancreatic cancer using PACO52286 at dilution of 1:100.



Immunofluorescent analysis of PC-3 cells using PACO52286 at dilution of 1:100 and Alexa Fluor 488-conjugated AffiniPure Goat Anti-Rabbit IgG(H+L).