

PACO52302

Product Information

Size:

50ug

Reactivity:

Human

Source:

Rabbit

Isotype:

IgG

Applications:

ELISA, IHC, IF

Recommended dilutions:

ELISA:1:2000-1:10000, IHC:1:20-1:200,
IF:1:50-1:200

Protein Background:

Essential multidomain scaffolding protein required for normal development. Recruits channels, receptors and signaling molecules to discrete plasma membrane domains in polarized cells. May play a role in adherens junction assembly, signal transduction, cell proliferation, synaptogenesis and lymphocyte activation. Regulates the excitability of cardiac myocytes by modulating the functional expression of Kv4 channels. Functional regulator of Kv1.5 channel.

Gene ID:

DLG1

Uniprot

Q12959

Synonyms:

Disks large homolog 1 (Synapse-associated protein 97) (SAP-97) (SAP97) (hDIg), DLG1

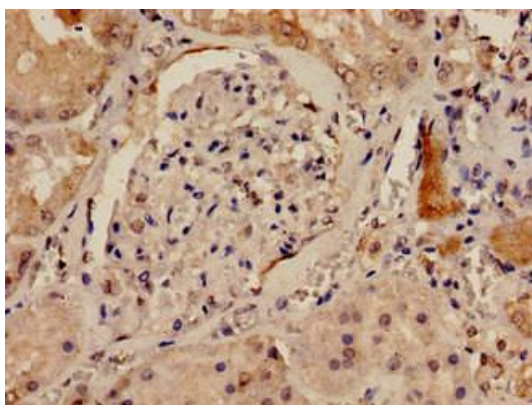
Immunogen:

Recombinant Human Disks large homolog 1 protein (662-773AA).

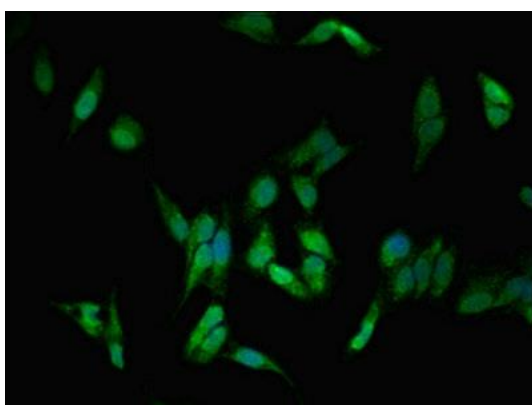
Storage:

Preservative: 0.03% Proclin 300. Constituents: 50% Glycerol, 0.01M PBS, pH 7.4

Product Images



Immunohistochemistry analysis of human kidney tissue using PACO52302 at dilution of 1:100.



Immunofluorescent analysis of HeLa cells using PACO52302 at dilution of 1:100 and Alexa Fluor 488-conjugated AffiniPure Goat Anti-Rabbit IgG(H+L).