

RALBP1 Antibody



PACO52338

Product Information

Size:

50ug

Reactivity:

Human

Source:

Rabbit

Isotype:

IgG

Applications:

ELISA, WB, IHC, IF

Recommended dilutions:

ELISA:1:2000-1:10000, WB:1:500-1:5000,
IHC:1:20-1:200, IF:1:50-1:200

Protein Background:

Can activate specifically hydrolysis of GTP bound to RAC1 and CDC42, but not RALA. Mediates ATP-dependent transport of S-(2,4-dinitrophenyl)-glutathione (DNP-SG) and doxorubicin (DOX) and is the major ATP-dependent transporter of glutathione conjugates of electrophiles (GS-E) and DOX in erythrocytes. Can catalyze transport of glutathione conjugates and xenobiotics, and may contribute to the multidrug resistance phenomenon. Serves as a scaffold protein that brings together proteins forming an endocytotic complex during interphase and also with CDK1 to switch off endocytosis, One of its substrates would be EPN1/Epsin.

Gene ID:

RALBP1

Uniprot

Q15311

Synonyms:

RalA-binding protein 1 (RalBP1) (76 kDa Ral-interacting protein) (Dinitrophenyl S-glutathione ATPase) (DNP-SG ATPase) (Ral-interacting protein 1), RALBP1, RLIP1 RLIP76

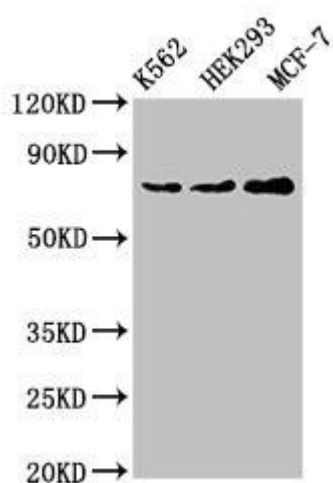
Immunogen:

Recombinant Human RalA-binding protein 1 protein (6-105AA).

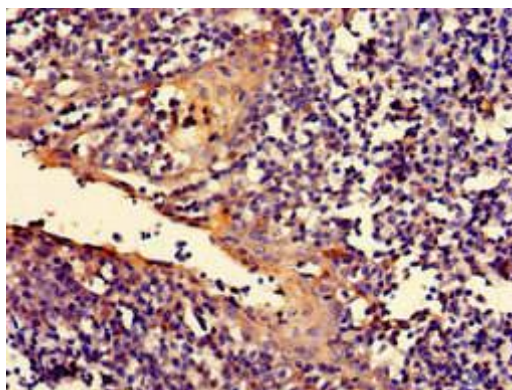
Storage:

Preservative: 0.03% Proclin 300. Constituents: 50% Glycerol, 0.01M PBS, pH 7.4

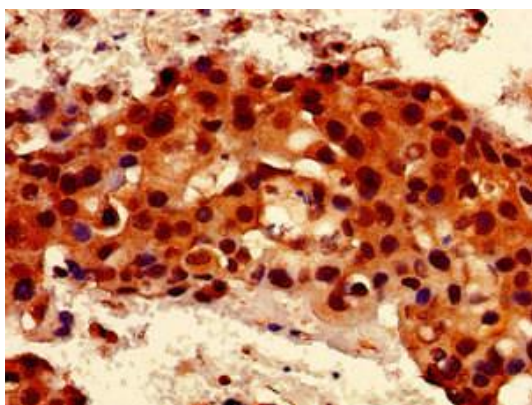
Product Images



Western Blot. Positive WB detected in: K562 whole cell lysate, HEK293 whole cell lysate, MCF-7 whole cell lysate. All lanes: RALBP1 antibody at 4 μ g/ml. Secondary. Goat polyclonal to rabbit IgG at 1/50000 dilution. Predicted band size: 77 kDa. Observed band size: 77 kDa.



Immunohistochemistry of paraffin-embedded human tonsil tissue using PACO52338 at dilution of 1:100.



Immunohistochemistry of paraffin-embedded human breast cancer using PACO52338 at dilution of 1:100.