

Product Information

Size:

50ug

Reactivity:

Human, Mouse, Rat

Source:

Rabbit

Isotype:

IgG

Applications:

ELISA, WB, IHC

Recommended dilutions:

ELISA:1:2000-1:10000, WB:1:500-1:5000,
IHC:1:20-1:200

Protein Background:

Has no ubiquitin ligase activity on its own. The UBE2V2/UBE2N heterodimer catalyzes the synthesis of non-canonical poly-ubiquitin chains that are linked through 'Lys-63'. This type of poly-ubiquitination does not lead to protein degradation by the proteasome. Mediates transcriptional activation of target genes. Plays a role in the control of progress through the cell cycle and differentiation. Plays a role in the error-free DNA repair pathway and contributes to the survival of cells after DNA damage.

Gene ID:

UBE2V2

Uniprot

Q15819

Synonyms:

Ubiquitin-conjugating enzyme E2 variant 2 (DDVit 1) (Enterocyte differentiation-associated factor 1) (EDAF-1) (Enterocyte differentiation-promoting factor 1) (EDPF-1) (MMS2 homolog) (Vitamin D3-inducible protein), UBE2V2, MMS2 UEV2

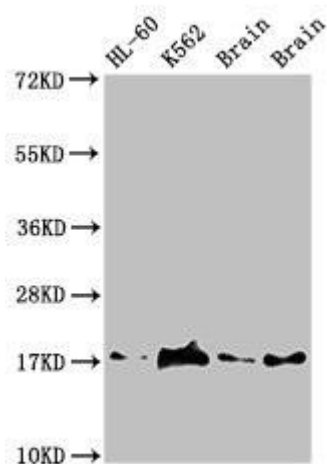
Immunogen:

Recombinant Human Ubiquitin-conjugating enzyme E2 variant 2 protein (2-145AA).

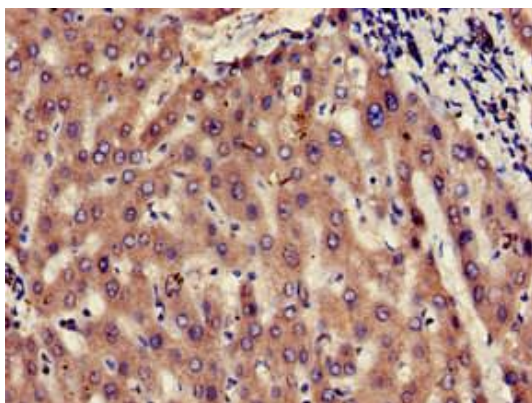
Storage:

Preservative: 0.03% Proclin 300. Constituents: 50% Glycerol, 0.01M PBS, pH 7.4

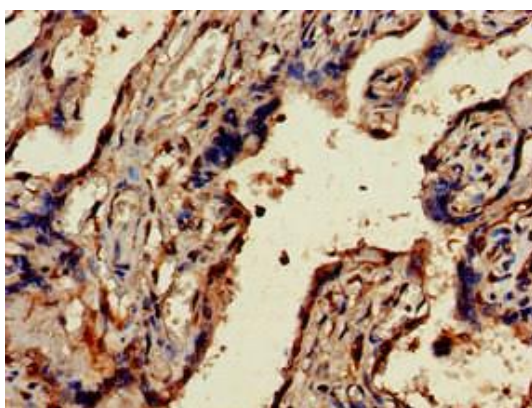
Product Images



Western Blot. Positive WB detected in: HL60 whole cell lysate, K562 whole cell lyaste, Mouse brain tissue, Rat brain tissue. All lanes: UBE2V2 antibody at 1.5 μ g/ml. Secondary. Goat polyclonal to rabbit IgG at 1/50000 dilution. Predicted band size: 17 kDa. Observed band size: 17 kDa.



Immunohistochemistry of paraffin-embedded human liver tissue using PACO52362 at dilution of 1:100.



Immunohistochemistry of paraffin-embedded human placenta tissue using PACO52362 at dilution of 1:100.