

IL10RA Antibody



PACO52370

Product Information

Size:

50ug

Reactivity:

Human

Source:

Rabbit

Isotype:

IgG

Applications:

ELISA, WB, IF

Recommended dilutions:

ELISA:1:2000-1:10000, WB:1:500-1:5000,
IF:1:50-1:200

Protein Background:

Receptor for IL10; binds IL10 with a high affinity.

Gene ID:

IL10RA

Uniprot

Q13651

Synonyms:

Interleukin-10 receptor subunit alpha (IL-10 receptor subunit alpha) (IL-10R subunit alpha) (IL-10RA) (CDw210a) (Interleukin-10 receptor subunit 1) (IL-10R subunit 1) (IL-10R1) (CD antigen CD210), IL10RA, IL10R

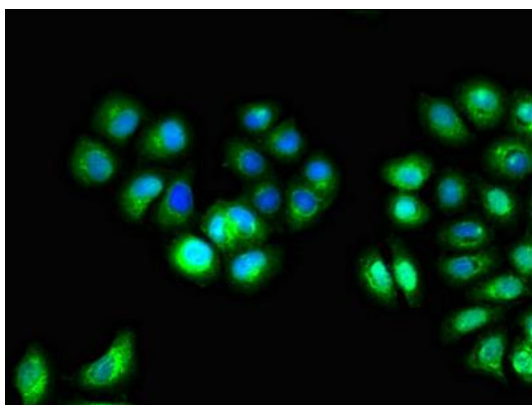
Immunogen:

Recombinant Human Interleukin-10 receptor subunit α protein (22-235AA).

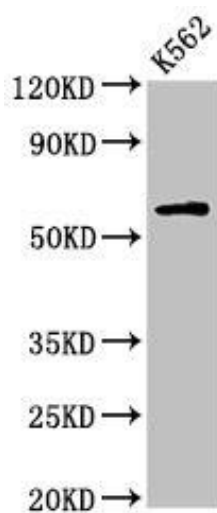
Storage:

Preservative: 0.03% Proclin 300. Constituents: 50% Glycerol, 0.01M PBS, pH 7.4

Product Images



Immunofluorescent analysis of A549 cells using PACO52370 at dilution of 1:100 and Alexa Fluor 488-conjugated AffiniPure Goat Anti-Rabbit IgG(H+L).



Western Blot. Positive WB detected in: K562 whole cell lysate. All lanes: IL10RA antibody at 2.7 μ g/ml. Secondary. Goat polyclonal to rabbit IgG at 1/50000 dilution. Predicted band size: 64 kDa. Observed band size: 64 kDa.