

LRRK1 Antibody



PACO52418

Product Information

Size:

50ug

Reactivity:

Human

Source:

Rabbit

Isotype:

IgG

Applications:

ELISA, WB

Recommended dilutions:

ELISA:1:2000-1:10000, WB:1:500-1:5000

Protein Background:

cytoplasm, mitochondrion, identical protein binding, positive regulation of canonical Wnt signaling pathway.

Gene ID:

LRRK1

Uniprot

Q38SD2

Synonyms:

Leucine-rich repeat serine/threonine-protein kinase 1 (EC 2.7.11.1), LRRK1, KIAA1790

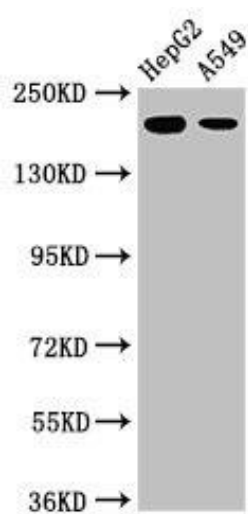
Immunogen:

Recombinant Human Leucine-rich repeat serine/threonine-protein kinase 1 protein (1-68AA).

Storage:

Preservative: 0.03% Proclin 300. Constituents: 50% Glycerol, 0.01M PBS, pH 7.4

Product Images



Western Blot. Positive WB detected in: HepG2 whole cell lysate, A549 whole cell lysate. All lanes: LRRK1 antibody at 3 μ g/ml. Secondary. Goat polyclonal to rabbit IgG at 1/50000 dilution. Predicted band size: 226, 29 kDa. Observed band size: 226 kDa.