

CASC1 Antibody



PACO52466

Product Information

Size:

50ug

Reactivity:

Human, Rat

Source:

Rabbit

Isotype:

IgG

Applications:

ELISA, WB, IHC

Recommended dilutions:

ELISA:1:2000-1:10000, WB:1:500-1:5000,
IHC:1:20-1:200

Protein Background:

Gene ID:

CASC1

Uniprot

Q6TDU7

Synonyms:

Protein CASC1 (Cancer susceptibility candidate gene 1 protein) (Lung adenoma susceptibility 1-like protein) (Protein phosphatase 1 regulatory subunit 54), CASC1, LAS1 PPP1R54

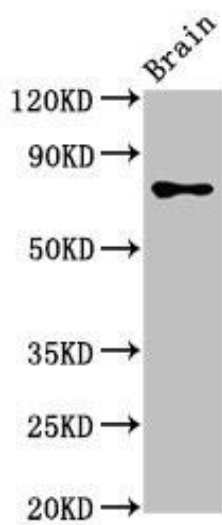
Immunogen:

Recombinant Human Protein CASC1 protein (1-300AA).

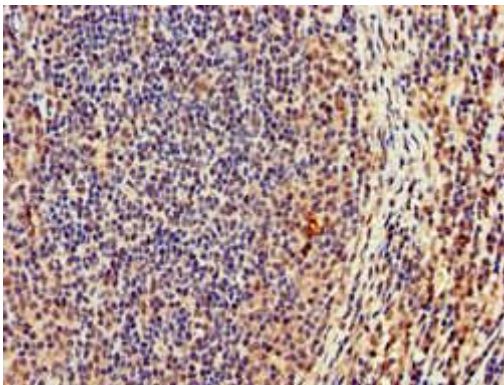
Storage:

Preservative: 0.03% Proclin 300. Constituents: 50% Glycerol, 0.01M PBS, pH 7.4

Product Images



Western Blot. Positive WB detected in: Rat brain tissue. All lanes: CASC1 antibody at 3.4 μ g/ml. Secondary. Goat polyclonal to rabbit IgG at 1/50000 dilution. Predicted band size: 84, 79, 82, 76 kDa. Observed band size: 84 kDa.



Immunohistochemistry of paraffin-embedded human lymph node tissue using PACO52466 at dilution of 1:100.