

PACO52470

Product Information

Size:

50ug

Reactivity:

Human

Source:

Rabbit

Isotype:

IgG

Applications:

ELISA, WB

Recommended dilutions:

ELISA:1:2000-1:10000, WB:1:500-1:5000

Protein Background:

Cation exchanger involved in pigmentation, possibly by participating in ion transport in melanosomes. Predominant sodium-calcium exchanger in melanocytes. Probably transports 1 Ca²⁺ and 1 K⁺ to the melanosome in exchange for 4 cytoplasmic Na⁺.

Gene ID:

SLC24A5

Uniprot

Q71RS6

Synonyms:

Sodium/potassium/calcium exchanger 5 (Na⁺)/K⁺/Ca²⁺-exchange protein 5 (Solute carrier family 24 member 5), SLC24A5, JSX NCKX5

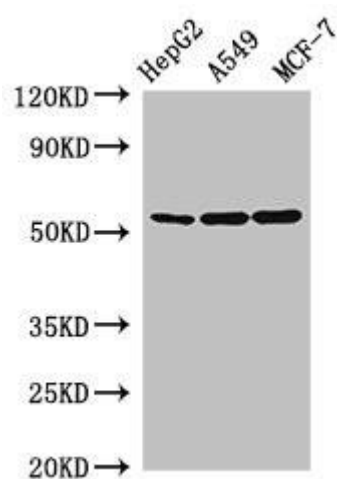
Immunogen:

Recombinant Human Sodium/potassium/calcium exchanger 5 protein (240-298AA).

Storage:

Preservative: 0.03% Proclin 300. Constituents: 50% Glycerol, 0.01M PBS, pH 7.4

Product Images



Western Blot. Positive WB detected in: HepG2 whole cell lysate, A549 whole cell lysate, MCF-7 whole cell lysate. All lanes: SLC24A5 antibody at 2.5 μ g/ml. Secondary. Goat polyclonal to rabbit IgG at 1/50000 dilution. Predicted band size: 55, 49 kDa. Observed band size: 55 kDa.