

TSR2 Antibody



PACO52566

Product Information

Size:

50ug

Reactivity:

Human

Source:

Rabbit

Isotype:

IgG

Applications:

ELISA, WB, IHC, IF

Recommended dilutions:

ELISA:1:2000-1:10000, WB:1:200-1:5000,
IHC:1:20-1:200, IF:1:50-1:200

Protein Background:

May be involved in 20S pre-rRNA processing.

Gene ID:

TSR2

Uniprot

Q969E8

Synonyms:

Pre-rRNA-processing protein TSR2 homolog, TSR2

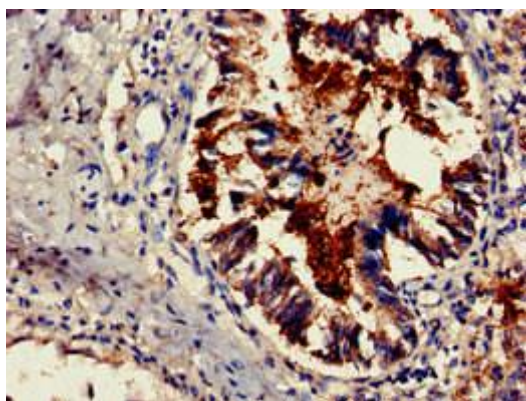
Immunogen:

Recombinant Human Pre-rRNA-processing protein TSR2 homolog protein (1-191AA).

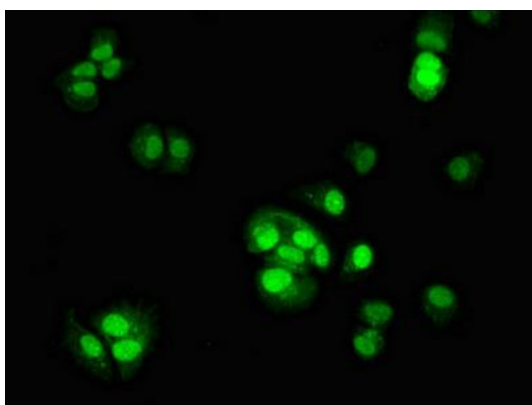
Storage:

Preservative: 0.03% Proclin 300. Constituents: 50% Glycerol, 0.01M PBS, pH 7.4

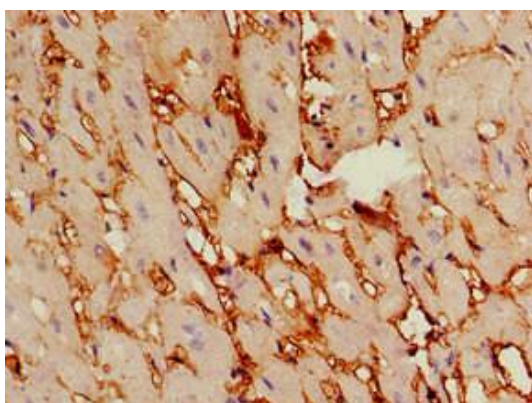
Product Images



Immunohistochemistry of paraffin-embedded human lung tissue using PACO52566 at dilution of 1:100.



Immunofluorescent analysis of MCF-7 cells using PACO52566 at dilution of 1:100 and Alexa Fluor 488-conjugated AffiniPure Goat Anti-Rabbit IgG(H+L).



Immunohistochemistry of paraffin-embedded human heart tissue using PACO52566 at dilution of 1:100.