

AKT1S1 Antibody



PACO52570

Product Information

Size:

50ug

Reactivity:

Human, Rat

Source:

Rabbit

Isotype:

IgG

Applications:

ELISA, WB, IHC

Recommended dilutions:

ELISA:1:2000-1:10000, WB:1:200-1:3000,
IHC:1:20-1:200

Protein Background:

Gene ID:

AKT1S1

Uniprot

Q96B36

Synonyms:

Proline-rich AKT1 substrate 1 (40 kDa proline-rich AKT substrate), AKT1S1, PRAS40

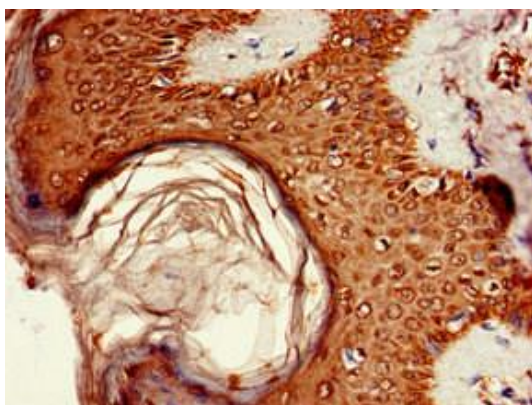
Immunogen:

Recombinant Human Proline-rich AKT1 substrate 1 protein (52-101AA).

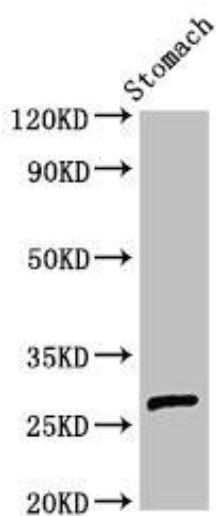
Storage:

Preservative: 0.03% Proclin 300. Constituents: 50% Glycerol, 0.01M PBS, pH 7.4

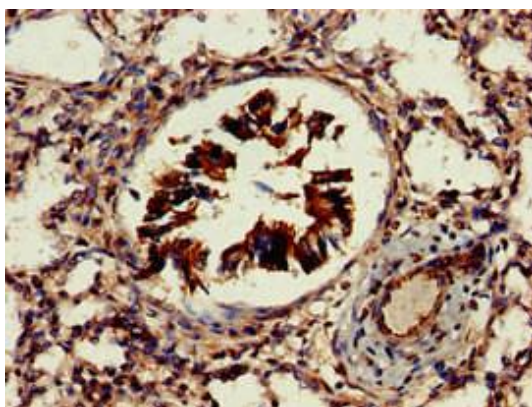
Product Images



Immunohistochemistry of paraffin-embedded human skin tissue using PACO52570 at dilution of 1:100.



Western Blot. Positive WB detected in: Rat stomach tissue. All lanes: AKT1S1 antibody at 3 μ g/ml. Secondary. Goat polyclonal to rabbit IgG at 1/50000 dilution. Predicted band size: 28, 14, 30 kDa. Observed band size: 28 kDa.



Immunohistochemistry of paraffin-embedded human lung tissue using PACO52570 at dilution of 1:100.