

DOT1L Antibody



PACO52674

Product Information

Size:

50ug

Reactivity:

Human

Source:

Rabbit

Isotype:

IgG

Applications:

ELISA, WB, IHC

Recommended dilutions:

ELISA:1:2000-1:10000, WB:1:500-1:5000,
IHC:1:20-1:200

Protein Background:

Histone methyltransferase. Methylates 'Lys-79' of histone H3. Nucleosomes are preferred as substrate compared to free histones. Binds to DNA.

Gene ID:

DOT1L

Uniprot

Q8TEK3

Synonyms:

Histone-lysine N-methyltransferase, H3 lysine-79 specific (EC 2.1.1.43) (DOT1-like protein) (Histone H3-K79 methyltransferase) (H3-K79-HMTase) (Lysine N-methyltransferase 4), DOT1L, KIAA1814 KMT4

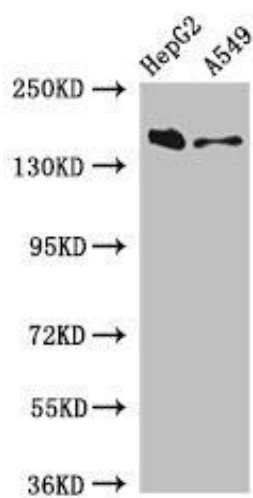
Immunogen:

Recombinant Human Histone-lysine N-methyltransferase, H3 lysine-79 specific protein (331-484AA).

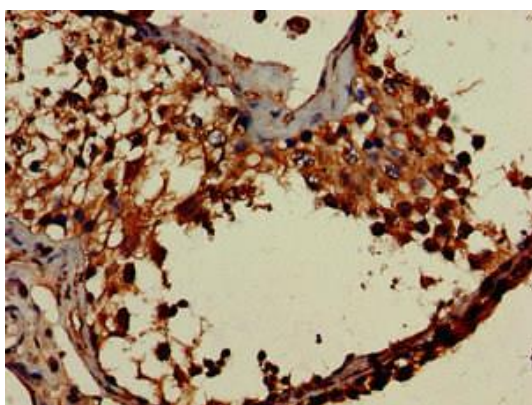
Storage:

Preservative: 0.03% Proclin 300. Constituents: 50% Glycerol, 0.01M PBS, pH 7.4

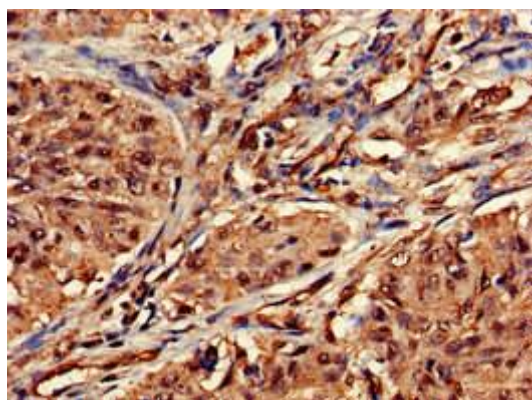
Product Images



Western Blot. Positive WB detected in: HepG2 whole cell lysate, A549 whole cell lysate. All lanes: DOT1L antibody at 3 μ g/ml. Secondary. Goat polyclonal to rabbit IgG at 1/50000 dilution. Predicted band size: 185, 165 kDa. Observed band size: 185 kDa.



Immunohistochemistry of paraffin-embedded human testis tissue using PACO52674 at dilution of 1:100.



Immunohistochemistry of paraffin-embedded human lung cancer using PACO52674 at dilution of 1:100.