

## Product Information

**Size:**

50ug

**Reactivity:**

Human

**Source:**

Rabbit

**Isotype:**

IgG

**Applications:**

ELISA, IHC, IF

**Recommended dilutions:**

ELISA:1:2000-1:10000, IHC:1:20-1:200,  
IF:1:50-1:200

**Protein Background:**

May regulate B-cell receptor (BCR)-induced immature and primary B-cell apoptosis. Plays a role as negative regulator of the canonical NF-kappa-B-activating branch. Controls spontaneous apoptosis through the regulation of BCL2L1 abundance.

**Gene ID:**

EFHD2

**Uniprot**

Q96C19

**Synonyms:**

EF-hand domain-containing protein D2 (Swiprosin-1), EFHD2, SWS1

**Immunogen:**

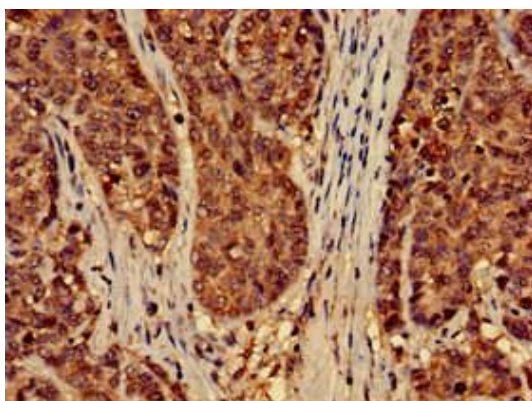
Recombinant Human EF-hand domain-containing protein D2 protein (2-240AA).

**Storage:**

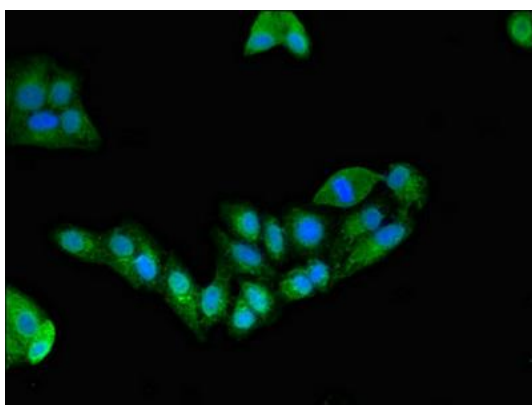
Preservative: 0.03% Proclin 300. Constituents: 50% Glycerol, 0.01M PBS, pH 7.4

## Product Images

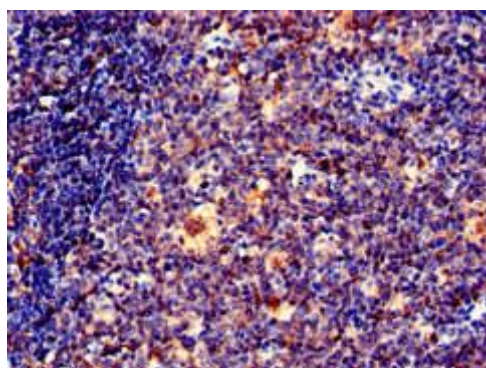
---



Immunohistochemistry of paraffin-embedded human ovarian cancer using PACO52706 at dilution of 1:100.



Immunofluorescent analysis of HepG2 cells using PACO52706 at dilution of 1:100 and Alexa Fluor 488-conjugated AffiniPure Goat Anti-Rabbit IgG(H+L).



Immunohistochemistry of paraffin-embedded human tonsil tissue using PACO52706 at dilution of 1:100.