

PACO52714

Product Information

Size:

50ug

Reactivity:

Human

Source:

Rabbit

Isotype:

IgG

Applications:

ELISA, IHC

Recommended dilutions:

ELISA:1:2000-1:10000, IHC:1:20-1:200

Protein Background:

Probable adapter protein located at the actin cytoskeleton that promotes cell attachment. Necessary for the migratory capacity of epithelial cells. Overexpression enhances cell adhesion to collagen and fibronectin and suppresses anchorage independent growth. May contribute to tumor cell migratory capacity.

Gene ID:

PDLIM2

Uniprot

Q96JY6

Synonyms:

PDZ and LIM domain protein 2 (PDZ-LIM protein mystique), PDLIM2

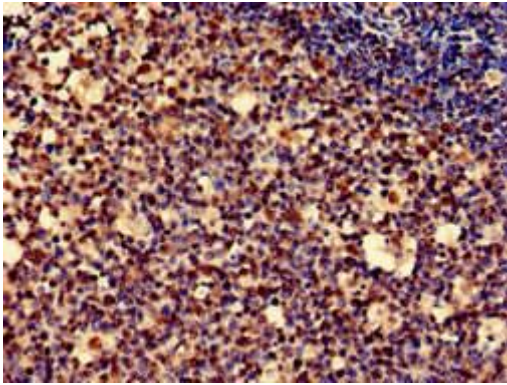
Immunogen:

Recombinant Human PDZ and LIM domain protein 2 protein (161-284AA).

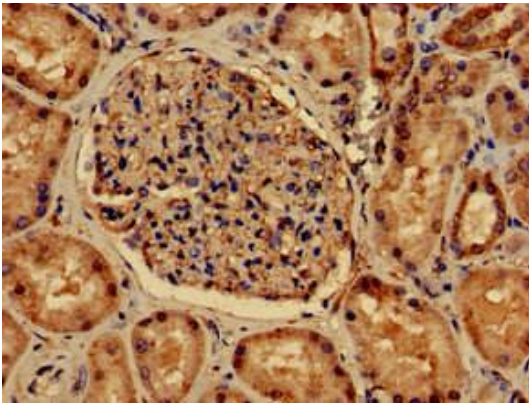
Storage:

Preservative: 0.03% Proclin 300. Constituents: 50% Glycerol, 0.01M PBS, pH 7.4

Product Images



Immunohistochemistry of paraffin-embedded human tonsil tissue using PACO52714 at dilution of 1:100.



Immunohistochemistry of paraffin-embedded human kidney tissue using PACO52714 at dilution of 1:100.