

PHAX Antibody



PACO52738

Product Information

Size:

50ug

Reactivity:

Human

Source:

Rabbit

Isotype:

IgG

Applications:

ELISA, WB, IF

Recommended dilutions:

ELISA:1:2000-1:10000, WB:1:500-1:5000,
IF:1:50-1:200

Protein Background:

Gene ID:

PHAX

Uniprot

Q9H814

Synonyms:

Phosphorylated adapter RNA export protein (RNA U small nuclear RNA export adapter protein), PHAX, RNUXA

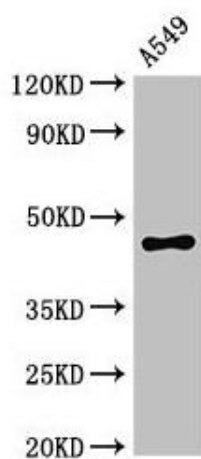
Immunogen:

Recombinant Human Phosphorylated adapter RNA export protein (6-243AA).

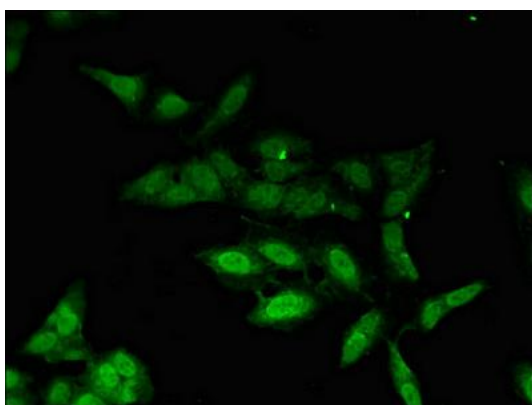
Storage:

Preservative: 0.03% Proclin 300. Constituents: 50% Glycerol, 0.01M PBS, pH 7.4

Product Images



Western Blot. Positive WB detected in: A549 whole cell lysate. All lanes: PHAX antibody at 2.8 μ g/ml. Secondary. Goat polyclonal to rabbit IgG at 1/50000 dilution. Predicted band size: 45 kDa. Observed band size: 45 kDa.



Immunofluorescent analysis of HeLa cells using PACO52738 at dilution of 1:100 and Alexa Fluor 488-conjugated AffiniPure Goat Anti-Rabbit IgG(H+L).