

PAC052770

---

## Product Information

**Size:**

50ug

**Reactivity:**

Human, Mouse

**Source:**

Rabbit

**Isotype:**

IgG

**Applications:**

ELISA, WB

**Recommended dilutions:**

ELISA:1:2000-1:10000, WB:1:500-1:5000

**Protein Background:**

Calcium-dependent mitochondrial solute carrier. Mitochondrial solute carriers shuttle metabolites, nucleotides, and cofactors through the mitochondrial inner membrane. May act as a ATP-Mg/Pi exchanger that mediates the transport of Mg-ATP in exchange for phosphate, catalyzing the net uptake or efflux of adenine nucleotides into or from the mitochondria. Acts as a regulator of mitochondrial calcium uptake via interaction with MCU and MICU1.

**Gene ID:**

SLC25A23

**Uniprot**

Q9BV35

**Synonyms:**

Calcium-binding mitochondrial carrier protein SCaMC-3 (Mitochondrial ATP-Mg/Pi carrier protein 2) (Mitochondrial Ca<sup>2+</sup>-dependent solute carrier protein 2) (Small calcium-binding mitochondrial carrier protein 3) (Solute carrier family 25 member 23), SLC25A23, APC2 MCSC2 SCAMC3

**Immunogen:**

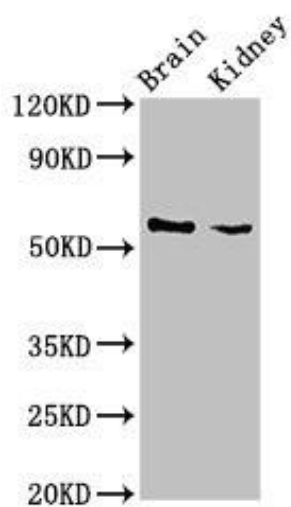
Recombinant Human Calcium-binding mitochondrial carrier protein SCaMC-3 protein (1-188AA).

**Storage:**

Preservative: 0.03% Proclin 300. Constituents: 50% Glycerol, 0.01M PBS, pH 7.4

## Product Images

---



Western Blot. Positive WB detected in: Mouse brain tissue, Mouse kidney tissue. All lanes: SLC25A23 antibody at 3 $\mu$ g/ml. Secondary: Goat polyclonal to rabbit IgG at 1/50000 dilution. Predicted band size: 53, 50, 55, 49 kDa. Observed band size: 53 kDa.