

Product Information

Size:

50ug

Reactivity:

Human, Mouse

Source:

Rabbit

Isotype:

IgG

Applications:

ELISA, WB, IHC, IF

Recommended dilutions:

ELISA:1:2000-1:10000, WB:1:500-1:5000,
IHC:1:20-1:200, IF:1:50-1:200

Protein Background:

Pathogen-recognition receptor expressed on the surface of immature dendritic cells (DCs) and involved in initiation of primary immune response. Thought to mediate the endocytosis of pathogens which are subsequently degraded in lysosomal compartments. The receptor returns to the cell membrane surface and the pathogen-derived antigens are presented to resting T-cells via MHC class II proteins to initiate the adaptive immune response.

Gene ID:

CD209

Uniprot

Q9NNX6

Synonyms:

CD209 antigen (C-type lectin domain family 4 member L) (Dendritic cell-specific ICAM-3-grabbing non-integrin 1) (DC-SIGN) (DC-SIGN1) (CD antigen CD209), CD209, CLEC4L

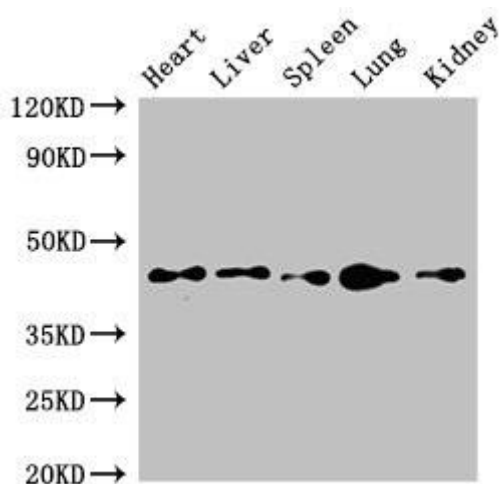
Immunogen:

Recombinant Human CD209 antigen protein (297-380AA).

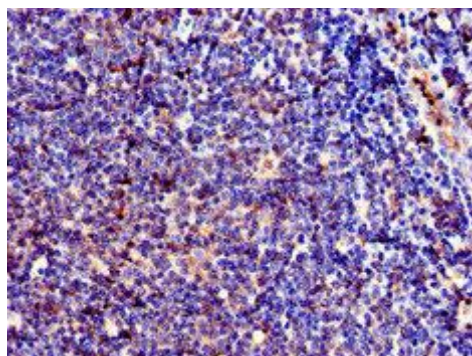
Storage:

Preservative: 0.03% Proclin 300. Constituents: 50% Glycerol, 0.01M PBS, pH 7.4

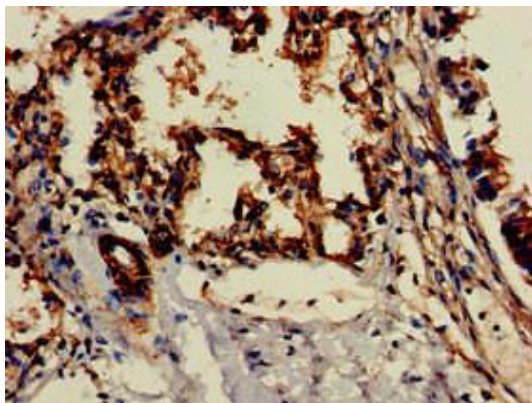
Product Images



Western Blot. Positive WB detected in: Mouse heart tissue, Mouse liver tissue, Mouse spleen tissue, Mouse lung tissue, Mouse kidney tissue. All lanes: CD209 antibody at 4 μ g/ml. Secondary. Goat polyclonal to rabbit IgG at 1/50000 dilution. Predicted band size: 46, 36, 19, 44, 42, 31, 5, 38, 34 kDa. Observed band size: 46 kDa.



Immunohistochemistry of paraffin-embedded human lymph node tissue using PACO52782 at dilution of 1:100.



Immunohistochemistry of paraffin-embedded human lung tissue using PACO52782 at dilution of 1:100.