

EIF4ENIF1 Antibody



PACO52790

Product Information

Size:

50ug

Reactivity:

Human, Mouse

Source:

Rabbit

Isotype:

IgG

Applications:

ELISA, WB, IHC, IF

Recommended dilutions:

ELISA:1:2000-1:10000, WB:1:500-1:5000,
IHC:1:20-1:200, IF:1:50-1:200

Protein Background:

Nucleoplasmic shuttling protein. Mediates the nuclear import of EIF4E by a piggy-back mechanism.

Gene ID:

EIF4ENIF1

Uniprot

Q9NRA8

Synonyms:

Eukaryotic translation initiation factor 4E transporter (4E-T) (eIF4E transporter) (Eukaryotic translation initiation factor 4E nuclear import factor 1), EIF4ENIF1

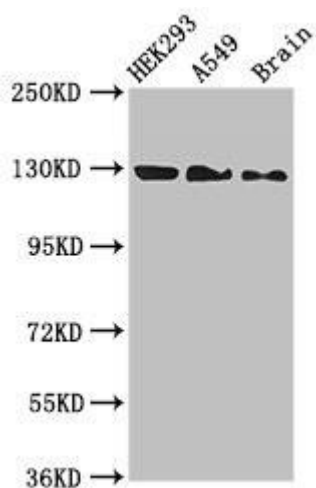
Immunogen:

Recombinant Human Eukaryotic translation initiation factor 4E transporter protein (340-630AA).

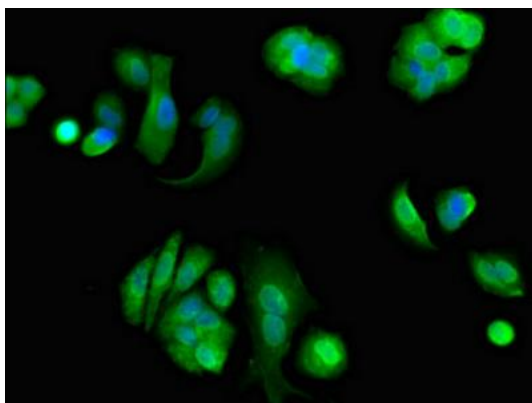
Storage:

Preservative: 0.03% Proclin 300. Constituents: 50% Glycerol, 0.01M PBS, pH 7.4

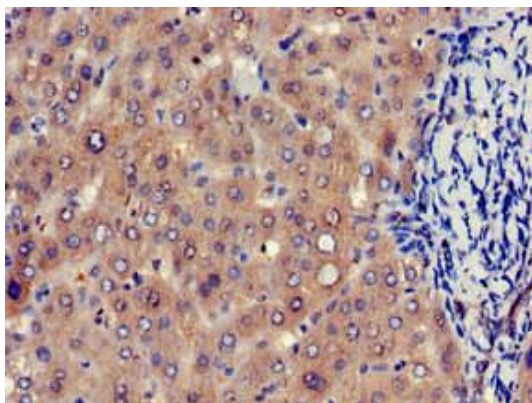
Product Images



Western Blot. Positive WB detected in: HEK293 whole cell lysate, A549 whole cell lysate, Mouse brain tissue. All lanes: EIF4ENIF1 antibody at 2.7 μ g/ml. Secondary. Goat polyclonal to rabbit IgG at 1/50000 dilution. Predicted band size: 109, 89 kDa. Observed band size: 130 kDa.



Immunofluorescent analysis of MCF-7 cells using PACO52790 at dilution of 1:100 and Alexa Fluor 488-conjugated AffiniPure Goat Anti-Rabbit IgG(H+L).



Immunohistochemistry of paraffin-embedded human liver tissue using PACO52790 at dilution of 1:100.