

Product Information

Size:

50ug

Reactivity:

Human

Source:

Rabbit

Isotype:

IgG

Applications:

ELISA, IHC

Recommended dilutions:

ELISA:1:2000-1:10000, IHC:1:20-1:200

Protein Background:

Ubiquitin-like modifier involved in formation of autophagosomal vacuoles (autophagosomes). Plays a role in mitophagy which contributes to regulate mitochondrial quantity and quality by eliminating the mitochondria to a basal level to fulfill cellular energy requirements and preventing excess ROS production. Whereas LC3s are involved in elongation of the phagophore membrane, the GABARAP/GATE-16 subfamily is essential for a later stage in autophagosome maturation. Promotes primary ciliogenesis by removing OFD1 from centriolar satellites via the autophagic pathway.

Gene ID:

MAP1LC3B

Uniprot

Q9GZQ8

Synonyms:

Microtubule-associated proteins 1A/1B light chain 3B (Autophagy-related protein LC3 B) (Autophagy-related ubiquitin-like modifier LC3 B) (MAP1 light chain 3-like protein 2) (MAP1A/MAP1B light chain 3 B) (MAP1A/MAP1B LC3 B) (Microtubule-associated protein 1 light chain 3 beta), MAP1LC3B, MAP1ALC3

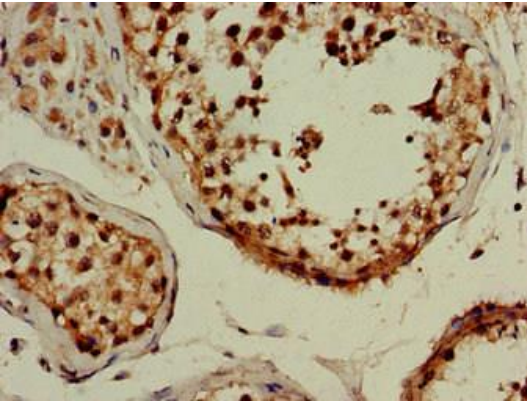
Immunogen:

Recombinant Human Microtubule-associated proteins 1A/1B light chain 3B protein (2-100AA).

Storage:

Preservative: 0.03% Proclin 300. Constituents: 50% Glycerol, 0.01M PBS, pH 7.4

Product Images



Immunohistochemistry of paraffin-embedded human testis tissue using PACO52858 at dilution of 1:100.