

Product Information

Size:

50ug

Reactivity:

Human

Source:

Rabbit

Isotype:

IgG

Applications:

ELISA, WB

Recommended dilutions:

ELISA:1:2000-1:10000, WB:1:500-1:5000

Protein Background:

RNA-binding protein which binds to intronic polypyrimidine tracts and mediates negative regulation of exons splicing. May antagonize in a tissue-specific manner the ability of NOVA1 to activate exon selection. In addition to its function in pre-mRNA splicing, plays also a role in the regulation of translation. Isoform 5 has a reduced affinity for RNA.

Gene ID:

PTBP2

Uniprot

Q9UKA9

Synonyms:

Polypyrimidine tract-binding protein 2 (Neural polypyrimidine tract-binding protein) (Neurally-enriched homolog of PTB) (PTB-like protein), PTBP2, NPTB PTB PTBLP

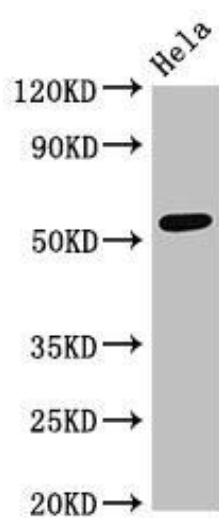
Immunogen:

Recombinant Human Polypyrimidine tract-binding protein 2 protein (13-289AA).

Storage:

Preservative: 0.03% Proclin 300. Constituents: 50% Glycerol, 0.01M PBS, pH 7.4

Product Images



Western Blot. Positive WB detected in: HeLa whole cell lysate. All lanes: PTBP2 antibody at 4 μ g/ml. Secondary. Goat polyclonal to rabbit IgG at 1/50000 dilution. Predicted band size: 58, 59, 38, 39 kDa. Observed band size: 58 kDa.