

Product Information

Size:

50ug

Reactivity:

Human

Source:

Rabbit

Isotype:

IgG

Applications:

ELISA, IF

Recommended dilutions:

ELISA:1:2000-1:10000, IF:1:50-1:200

Protein Background:

E3 ubiquitin-protein ligase mediating 'Lys-48'-linked polyubiquitination of LIMK1 and its subsequent targeting to the proteasome for degradation. Negatively regulates axonal outgrowth through regulation of the LIMK1 turnover. Mediates 'Lys-6' and 'Lys-27'-linked polyubiquitination of AR/androgen receptor thereby modulating its transcriptional activity. May also bind DNA and function as a transcriptional regulator.

Gene ID:

RNF6

Uniprot

Q9Y252

Synonyms:

E3 ubiquitin-protein ligase RNF6 (EC 2.3.2.27) (RING-type E3 ubiquitin transferase RNF6), RNF6, SPG2

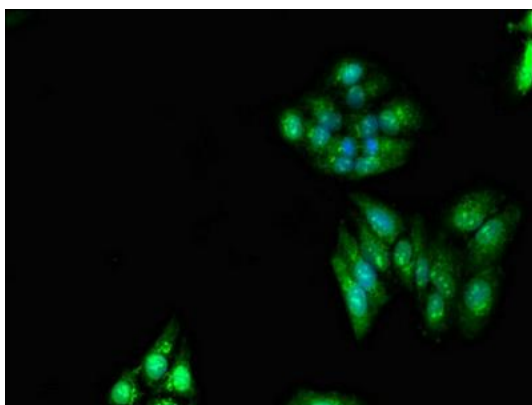
Immunogen:

Recombinant Human E3 ubiquitin-protein ligase RNF6 protein (1-298AA).

Storage:

Preservative: 0.03% Proclin 300. Constituents: 50% Glycerol, 0.01M PBS, pH 7.4

Product Images



Immunofluorescent analysis of HepG2 cells using PACO52926 at dilution of 1:100 and Alexa Fluor 488-conjugated AffiniPure Goat Anti-Rabbit IgG(H+L).