

# LOXL2 Antibody



PACO52930

---

## Product Information

**Size:**

50ug

**Reactivity:**

Human, Mouse, Rat

**Source:**

Rabbit

**Isotype:**

IgG

**Applications:**

ELISA, WB, IHC

**Recommended dilutions:**

ELISA:1:2000-1:10000, WB:1:500-1:5000,  
IHC:1:20-1:200

**Protein Background:****Gene ID:**

LOXL2

**Uniprot**

Q9Y4K0

**Synonyms:**

Lysyl oxidase homolog 2 (EC 1.4.3.13) (Lysyl oxidase-like protein 2) (Lysyl oxidase-related protein 2) (Lysyl oxidase-related protein WS9-14), LOXL2

**Immunogen:**

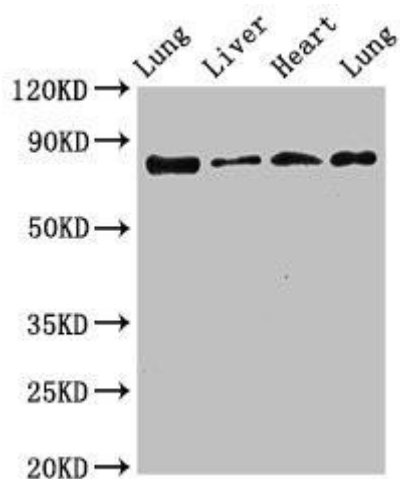
Recombinant Human Lysyl oxidase homolog 2 protein (27-121AA).

**Storage:**

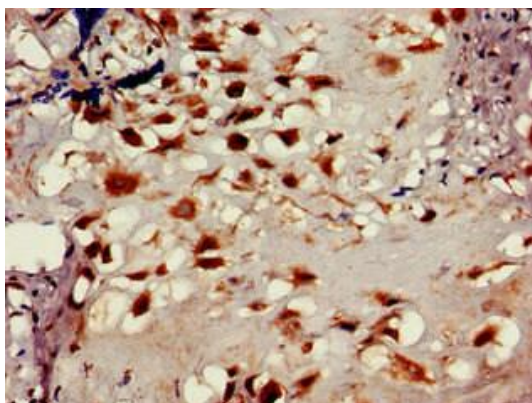
Preservative: 0.03% Proclin 300. Constituents: 50% Glycerol, 0.01M PBS, pH 7.4

## Product Images

---



Western Blot. Positive WB detected in: Rat lung tissue, Rat liver tissue, Mouse heart tissue, Mouse lung tissue. All lanes: LOXL2 antibody at 3.5 $\mu$ g/ml. Secondary. Goat polyclonal to rabbit IgG at 1/50000 dilution. Predicted band size: 87 kDa. Observed band size: 87 kDa.



Immunohistochemistry of paraffin-embedded human placenta tissue using PACO52930 at dilution of 1:100.