

PACO52966

Product Information

Size:

50ug

Reactivity:

Human

Source:

Rabbit

Isotype:

IgG

Applications:

ELISA, IHC

Recommended dilutions:

ELISA:1:2000-1:10000, IHC:1:20-1:200

Protein Background:

Has activity against the synthetic substrates Boc-Phe-Ser-Arg-Mec, Boc-Leu-Thr-Arg-Mec, Boc-Gln-Ala-Arg-Mec and Boc-Val-Pro-Arg-Mec. The single-chain form is more active than the two-chain form against all of these substrates.

Gene ID:

PRSS1

Uniprot

P07477

Synonyms:

Trypsin-1 (EC 3.4.21.4) (Beta-trypsin) (Cationic trypsinogen) (Serine protease 1) (Trypsin I) [Cleaved into: Alpha-trypsin chain 1; Alpha-trypsin chain 2], PRSS1, TRP1 TRY1 TRYP1

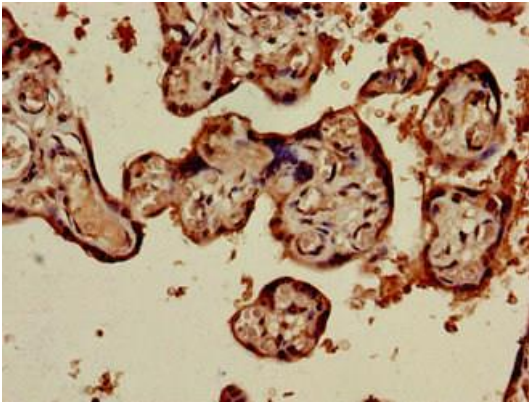
Immunogen:

Recombinant Human Trypsin-1 protein (104-206AA).

Storage:

Preservative: 0.03% Proclin 300. Constituents: 50% Glycerol, 0.01M PBS, pH 7.4

Product Images



Immunohistochemistry of paraffin-embedded human placenta tissue using PACO52966 at dilution of 1:100.