

# ALAS1 Antibody



PACO52994

---

## Product Information

**Size:**

50ug

**Reactivity:**

Human

**Source:**

Rabbit

**Isotype:**

IgG

**Applications:**

ELISA, IHC

**Recommended dilutions:**

ELISA:1:2000-1:10000, IHC:1:20-1:200

**Protein Background:**

cytoplasm, mitochondrial matrix, mitochondrion, nucleoplasm, 5-aminolevulinate synthase activity, identical protein binding, heme biosynthetic process, mitochondrion organization.

**Gene ID:**

ALAS1

**Uniprot**

P13196

**Synonyms:**

5-aminolevulinate synthase, nonspecific, mitochondrial (ALAS-H) (EC 2.3.1.37) (5-aminolevulinic acid, synthase 1) (Delta-ALA synthase 1) (Delta-aminolevulinate synthase 1), ALAS1, ALAS3 ALASH

**Immunogen:**

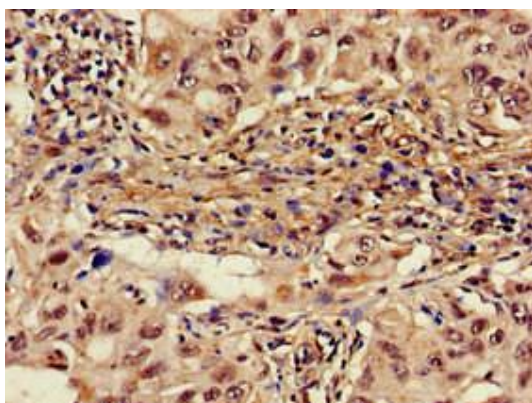
Recombinant Human 5-aminolevulinate synthase, nonspecific, mitochondrial protein (57-285AA).

**Storage:**

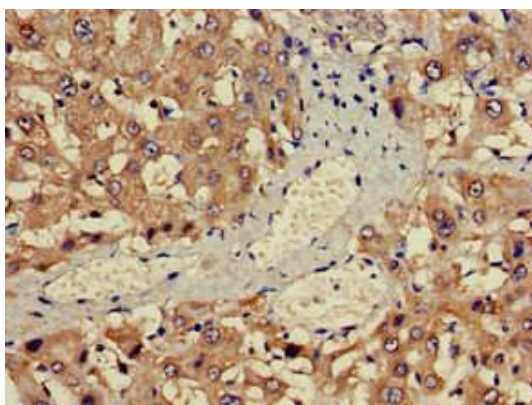
Preservative: 0.03% Proclin 300. Constituents: 50% Glycerol, 0.01M PBS, pH 7.4

## Product Images

---



Immunohistochemistry of paraffin-embedded human lung cancer using PACO52994 at dilution of 1:100.



Immunohistochemistry of paraffin-embedded human liver cancer using PACO52994 at dilution of 1:100.