

# DEPDC1B Antibody



PACO53154

---

## Product Information

**Size:**

50ug

**Reactivity:**

Human

**Source:**

Rabbit

**Isotype:**

IgG

**Applications:**

ELISA, WB, IHC, IF

**Recommended dilutions:**

ELISA:1:2000-1:10000, WB:1:500-1:5000,  
IHC:1:20-1:200, IF:1:50-1:200

**Protein Background:**

cytosol, GTPase activator activity, cell migration, positive regulation of Wnt signaling pathway, regulation of small GTPase mediated signal transduction.

**Gene ID:**

DEPDC1B

**Uniprot**

Q8WUY9

**Synonyms:**

DEP domain-containing protein 1B (HBV X-transactivated gene 8 protein) (HBV XAg-transactivated protein 8), DEPDC1B, XTP8

**Immunogen:**

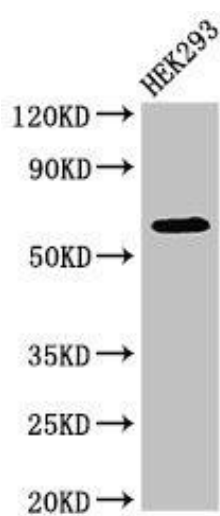
Recombinant Human DEP domain-containing protein 1B protein (343-529AA).

**Storage:**

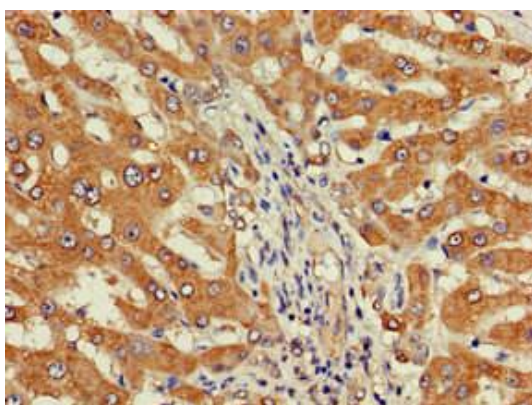
Preservative: 0.03% Proclin 300. Constituents: 50% Glycerol, 0.01M PBS, pH 7.4

## Product Images

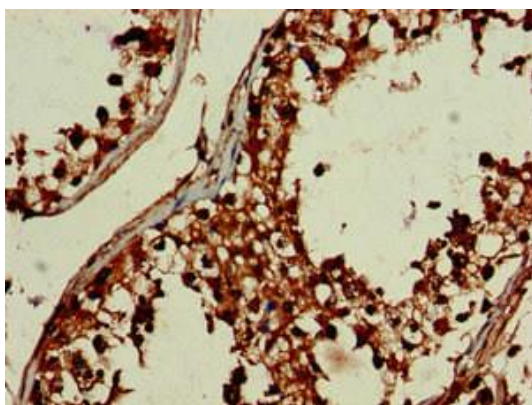
---



Western Blot. Positive WB detected in: HEK293 whole cell lysate. All lanes: DEPDC1B antibody at 4 $\mu$ g/ml. Secondary. Goat polyclonal to rabbit IgG at 1/50000 dilution. Predicted band size: 62, 55 kDa. Observed band size: 62 kDa.



Immunohistochemistry of paraffin-embedded human liver cancer using PACO53154 at dilution of 1:100.



Immunohistochemistry of paraffin-embedded human testis tissue using PACO53154 at dilution of 1:100.