

Product Information

Size:

50ug

Reactivity:

Human

Source:

Rabbit

Isotype:

IgG

Applications:

ELISA, IHC, IF

Recommended dilutions:

ELISA:1:2000-1:10000, IHC:1:20-1:200,
IF:1:50-1:200

Protein Background:

clathrin-coated vesicle, extracellular exosome, extrinsic component of plasma membrane, intracellular membrane-bounded organelle, nucleoplasm, nucleus, perinuclear region of cytoplasm.

Gene ID:

EPN3

Uniprot

Q9H201

Synonyms:

Epsin-3 (EPS-15-interacting protein 3), EPN3

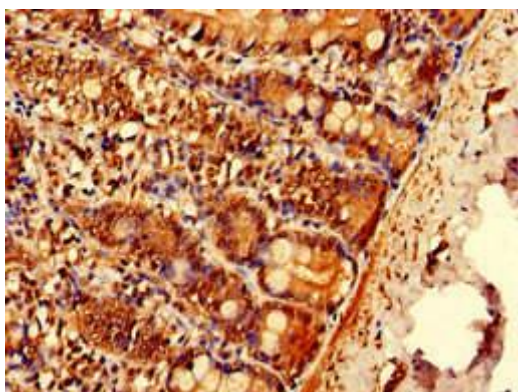
Immunogen:

Recombinant Human Epsin-3 protein (25-208AA).

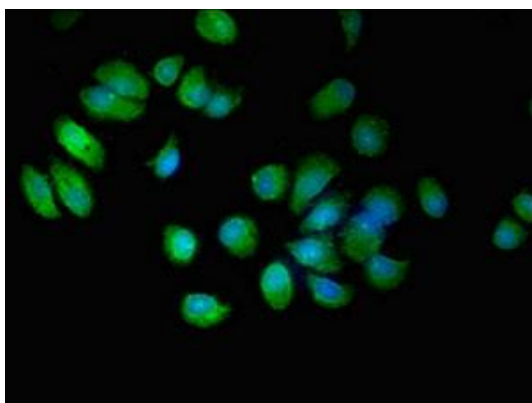
Storage:

Preservative: 0.03% Proclin 300. Constituents: 50% Glycerol, 0.01M PBS, pH 7.4

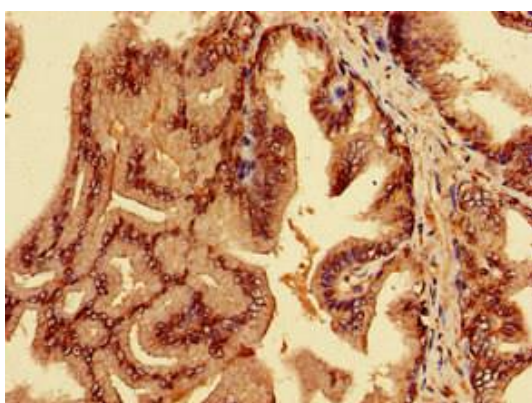
Product Images



Immunohistochemistry of paraffin-embedded human small intestine tissue using PACO53178 at dilution of 1:100.



Immunofluorescent analysis of MCF-7 cells using PACO53178 at dilution of 1:100 and Alexa Fluor 488-conjugated AffiniPure Goat Anti-Rabbit IgG(H+L).



Immunohistochemistry of paraffin-embedded human prostate cancer using PACO53178 at dilution of 1:100.