

BIN3 Antibody



PACO53222

Product Information

Size:

50ug

Reactivity:

Human

Source:

Rabbit

Isotype:

IgG

Applications:

ELISA, IF

Recommended dilutions:

ELISA:1:2000-1:10000, IF:1:50-1:200

Protein Background:

Involved in cytokinesis and septation where it has a role in the localization of F-actin.

Gene ID:

BIN3

Uniprot

Q9NQY0

Synonyms:

Bridging integrator 3, BIN3

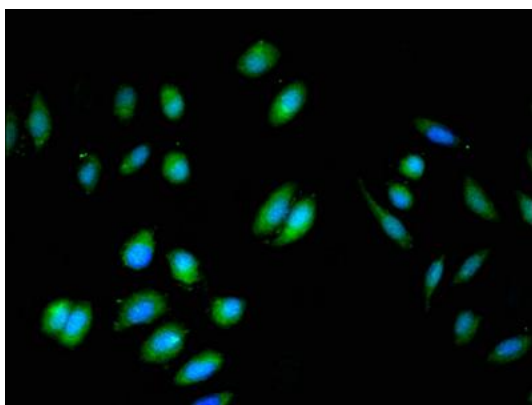
Immunogen:

Recombinant Human Bridging integrator 3 protein (8-240AA).

Storage:

Preservative: 0.03% Proclin 300. Constituents: 50% Glycerol, 0.01M PBS, pH 7.4

Product Images



Immunofluorescent analysis of A549 cells using PACO53222 at dilution of 1:100 and Alexa Fluor 488-conjugated AffiniPure Goat Anti-Rabbit IgG(H+L).