

PACO53250

Product Information

Size:

50ug

Reactivity:

Human

Source:

Rabbit

Isotype:

IgG

Applications:

ELISA, IHC

Recommended dilutions:

ELISA:1:2000-1:10000, IHC:1:20-1:200

Protein Background:

Catalyzes the conversion of L-dopachrome into 5,6-dihydroxyindole-2-carboxylic acid, (DHICA). Involved in regulating eumelanin and phaeomelanin levels.

Gene ID:

DCT

Uniprot

P40126

Synonyms:

L-dopachrome tautomerase (DCT) (DT) (EC 5.3.3.12) (L-dopachrome Delta-isomerase) (Tyrosinase-related protein 2) (TRP-2) (TRP2), DCT, TYRP2

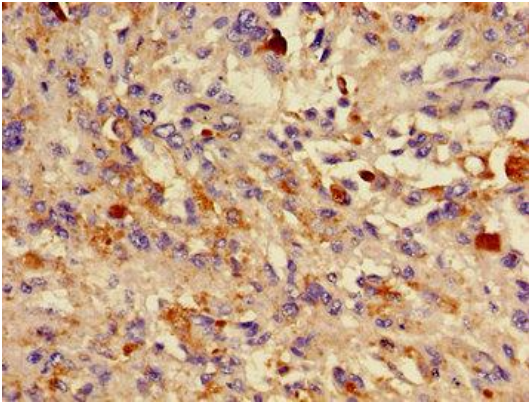
Immunogen:

Recombinant Human L-dopachrome tautomerase protein (44-205AA).

Storage:

Preservative: 0.03% Proclin 300. Constituents: 50% Glycerol, 0.01M PBS, pH 7.4

Product Images



Immunohistochemistry of paraffin-embedded human melanoma using PACO53250 at dilution of 1:100.