

RPL10A Antibody



PACO53394

Product Information

Size:

50ug

Reactivity:

Human

Source:

Rabbit

Isotype:

IgG

Applications:

ELISA, IF

Recommended dilutions:

ELISA:1:2000-1:10000, IF:1:50-1:200

Protein Background:

cytoplasm, cytosol, cytosolic large ribosomal subunit, extracellular exosome, focal adhesion, membrane, nucleolus, nucleus, poly(A) RNA binding, RNA binding.

Gene ID:

RPL10A

Uniprot

P62906

Synonyms:

60S ribosomal protein L10a (CSA-19) (Large ribosomal subunit protein uL1) (Neural precursor cell expressed developmentally down-regulated protein 6) (NEDD-6), RPL10A, NEDD6

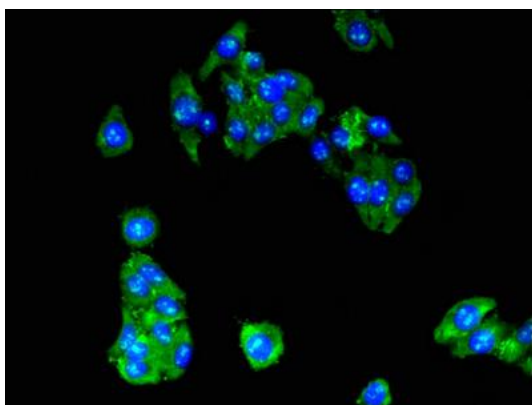
Immunogen:

Recombinant Human 60S ribosomal protein L10a protein (40-80AA).

Storage:

Preservative: 0.03% Proclin 300. Constituents: 50% Glycerol, 0.01M PBS, pH 7.4

Product Images



Immunofluorescent analysis of HepG2 cells using PACO53394 at dilution of 1:100 and Alexa Fluor 488-conjugated AffiniPure Goat Anti-Rabbit IgG(H+L).