

MSH2 Antibody



PACO53418

Product Information

Size:

50ug

Reactivity:

Human, Mouse

Source:

Rabbit

Isotype:

IgG

Applications:

ELISA, WB, IHC, IP

Recommended dilutions:

ELISA:1:2000-1:10000, WB:1:500-1:5000,
IHC:1:200-1:500, IP:1:200-1:2000

Protein Background:**Gene ID:**

MSH2

Uniprot

P43246

Synonyms:

DNA mismatch repair protein Msh2 (hMSH2) (MutS protein homolog 2), MSH2

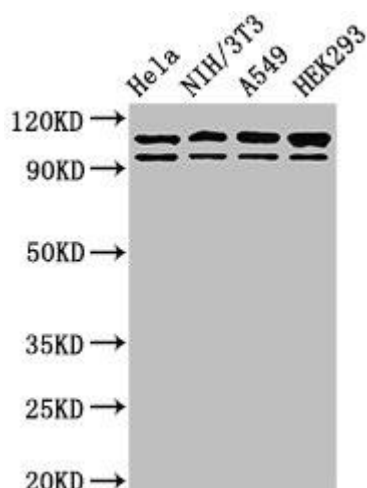
Immunogen:

Recombinant Human DNA mismatch repair protein Msh2 protein (2-254AA).

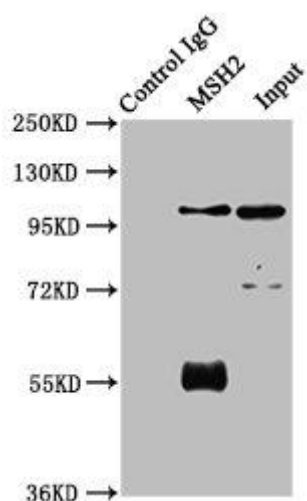
Storage:

Preservative: 0.03% Proclin 300. Constituents: 50% Glycerol, 0.01M PBS, pH 7.4

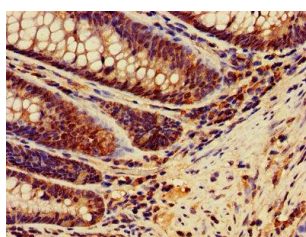
Product Images



Western Blot. Positive WB detected in: HeLa whole cell lysate, NIH/3T3 whole cell lysate, A549 whole cell lysate, HEK293 whole cell lysate. All lanes: MSH2 antibody at 2 μ g/ml. Secondary: Goat polyclonal to rabbit IgG at 1/50000 dilution. Predicted band size: 105, 98 kDa. Observed band size: 105, 98 kDa.



Immunoprecipitating MSH2 in 293 whole cell lysate. Lane 1: Rabbit control IgG instead of PACO53418 in 293 whole cell lysate. For western blotting, a HRP-conjugated Protein G antibody was used as the secondary antibody (1/2000). Lane 2: PACO53418 (6 μ g) + 293 whole cell lysate (1mg). Lane 3: 293 whole cell lysate (20 μ g).



IHC image of PACO53418 diluted at 1:400 and staining in paraffin-embedded human colon cancer performed on a Leica BondTM system. After dewaxing and hydration, antigen retrieval was mediated by high pressure in a citrate buffer (pH 6.0). Section was blocked with 10% normal goat serum 30min at RT. Then primary antibody (1% BSA) was incubated at 4 $^{\circ}$ C overnight. The primary is detected by a biotinylated secondary antibody and visualized using an HRP conjugated SP system.