

CDH18 Antibody



PACO53458

Product Information

Size:

50ug

Reactivity:

Human, Mouse

Source:

Rabbit

Isotype:

IgG

Applications:

ELISA, WB, IHC, IF

Recommended dilutions:

ELISA:1:2000-1:10000, WB:1:500-1:5000,
IHC:1:20-1:200, IF:1:50-1:200

Protein Background:

Cadherins are calcium-dependent cell adhesion proteins. They preferentially interact with themselves in a homophilic manner in connecting cells; cadherins may thus contribute to the sorting of heterogeneous cell types.

Gene ID:

CDH18

Uniprot

Q13634

Synonyms:

Cadherin-18 (Cadherin-14), CDH18, CDH14

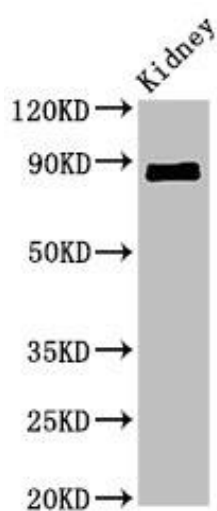
Immunogen:

Recombinant Human Cadherin-18 protein (66-251AA).

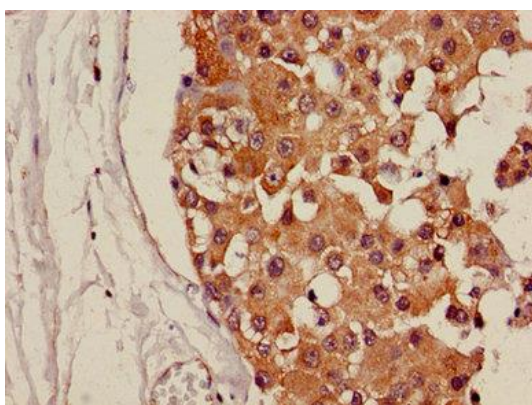
Storage:

Preservative: 0.03% Proclin 300. Constituents: 50% Glycerol, 0.01M PBS, pH 7.4

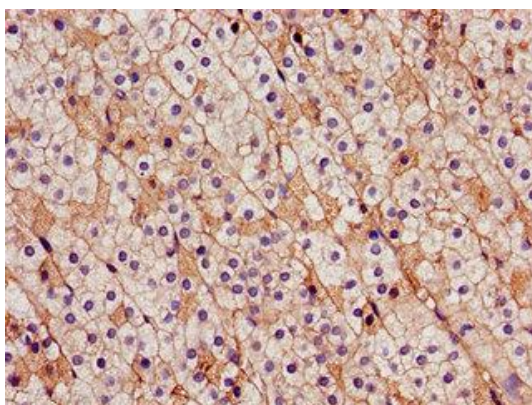
Product Images



Western Blot. Positive WB detected in: Mouse kidney tissue. All lanes: CDH18 antibody at 2.4 μ g/ml. Secondary. Goat polyclonal to rabbit IgG at 1/50000 dilution. Predicted band size: 89, 64 kDa. Observed band size: 89 kDa.



Immunohistochemistry of paraffin-embedded human breast cancer using PACO53458 at dilution of 1:100.



Immunohistochemistry of paraffin-embedded human adrenal gland tissue using PACO53458 at dilution of 1:100.